

Johnson County, Iowa
Iowa South Zone (1402)
Horiz. Datum: NAD83(1996)
Vert. Datum: NAVD 1988
US Survey Feet
2006

Point Name: **211**

Designation: 2006-211 Johnson Co GPS Control Pt. (Set by DCI in 2006)

Northing: **604062.89sft** Easting: **2113249.15sft**

Orthometric Height: **821.27sft** Ellipsoid Height: **714.64sft** **Geoid03**

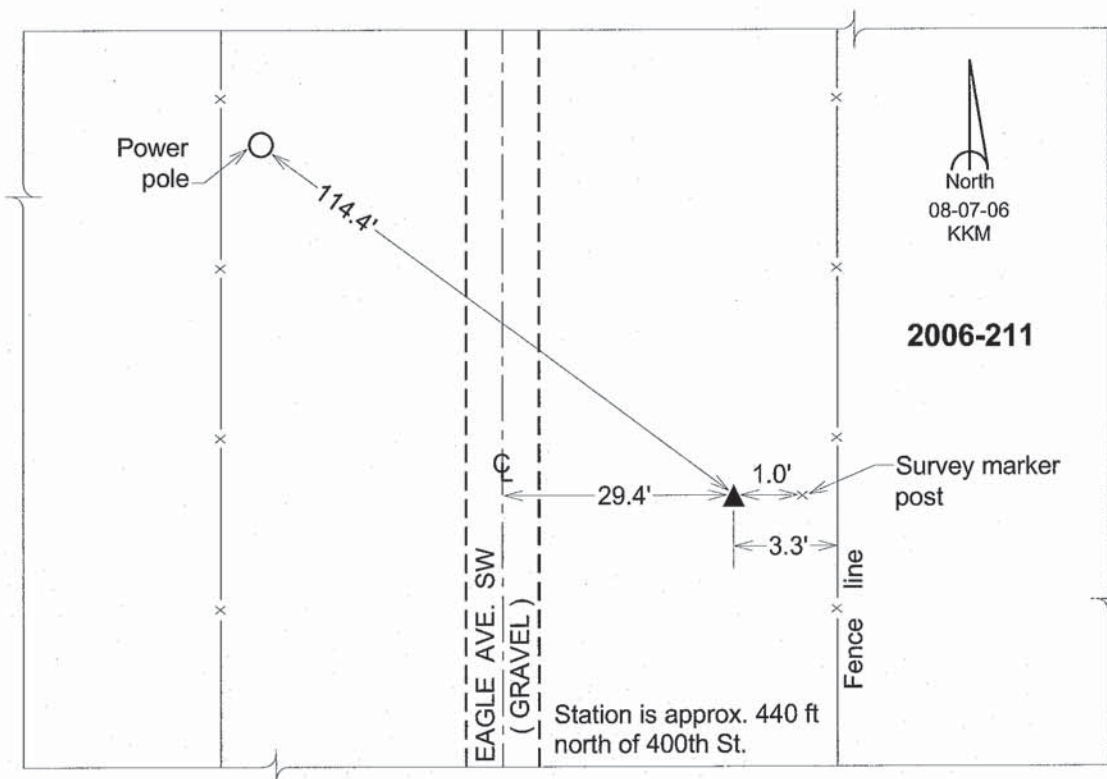
Latitude: **41°38'42.21493"N**

Longitude: **91°46'11.71150"W**

Mapping Angle: **1°08'23"**

Combination Scale Factor: **0.99994427**

Monument Type: Berntsen Top Security Rod Monument with a 2-1/2" dia. domed survey cap and permanent magnet encased in a 6" dia. PVC pipe with a NGS style aluminum access cover.



This document was prepared by DCI and GBC for use by Johnson County, Iowa.