

**Johnson County, Iowa**  
 Iowa South Zone (1402)  
 Horiz. Datum: NAD83(1996)  
 Vert. Datum: NAVD 1988  
 US Survey Feet  
**2006**

Point Name: **213**

**Designation:** 2006-213 Johnson Co GPS Control Pt. (Set by DCI in 2006)

Northing: **605036.30sft**    Easting: **2207450.29sft**

Orthometric Height: **776.45sft**    Ellipsoid Height: **669.40sft**    **Geoid03**

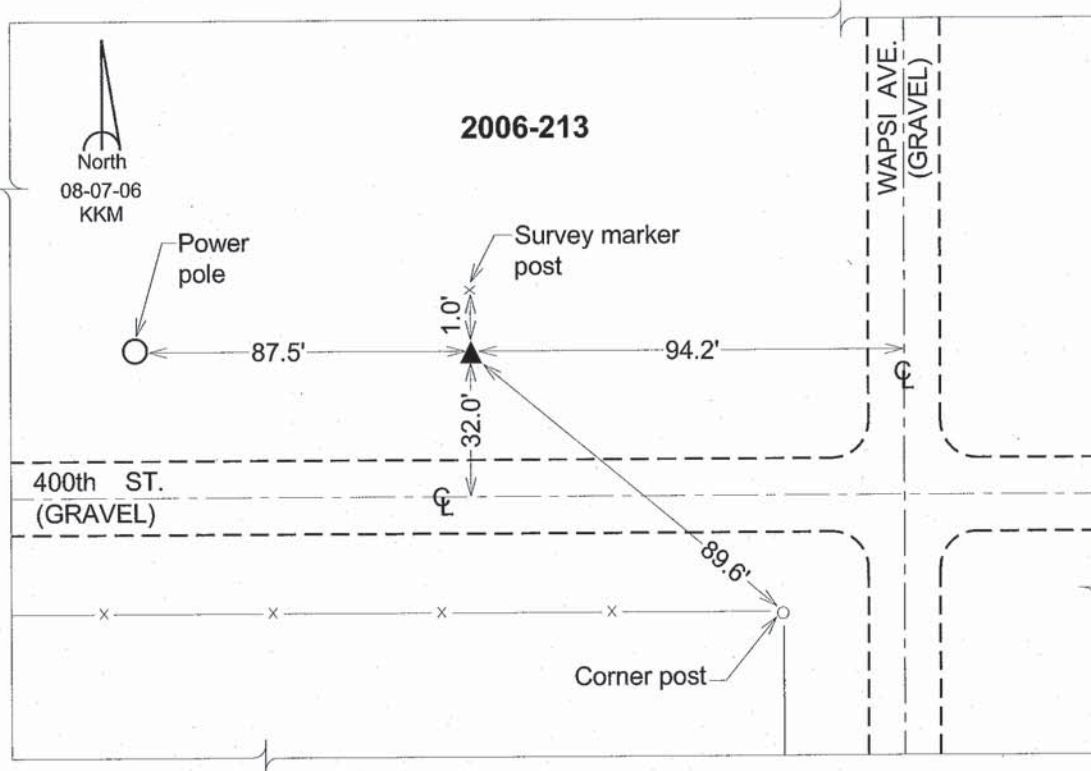
Latitude: **41°38'31.47630"N**

Longitude: **91°25'30.99211"W**

Mapping Angle: **1°22'00"**

Combination Scale Factor: **0.99994603**

**Monument Type:** Berntsen Top Security Rod Monument with a 2-1/2" dia. domed survey cap and permanent magnet encased in a 6" dia. PVC pipe with a NGS style aluminum access cover.



*This document was prepared by DCI and GBC for use by Johnson County, Iowa.*