

**Johnson County, Iowa**  
Iowa South Zone (1402)  
Horiz. Datum: NAD83(1996)  
Vert. Datum: NAVD 1988  
US Survey Feet  
**2006**

Point Name: **218**

**Designation:** 2006-218 Johnson Co GPS Control Pt. (Set by DCI in 2006)

Northing: **561728.78sft**    Easting: **2208416.34sft**

Orthometric Height: **693.22sft**    Ellipsoid Height: **585.85sft**    **Geoid03**

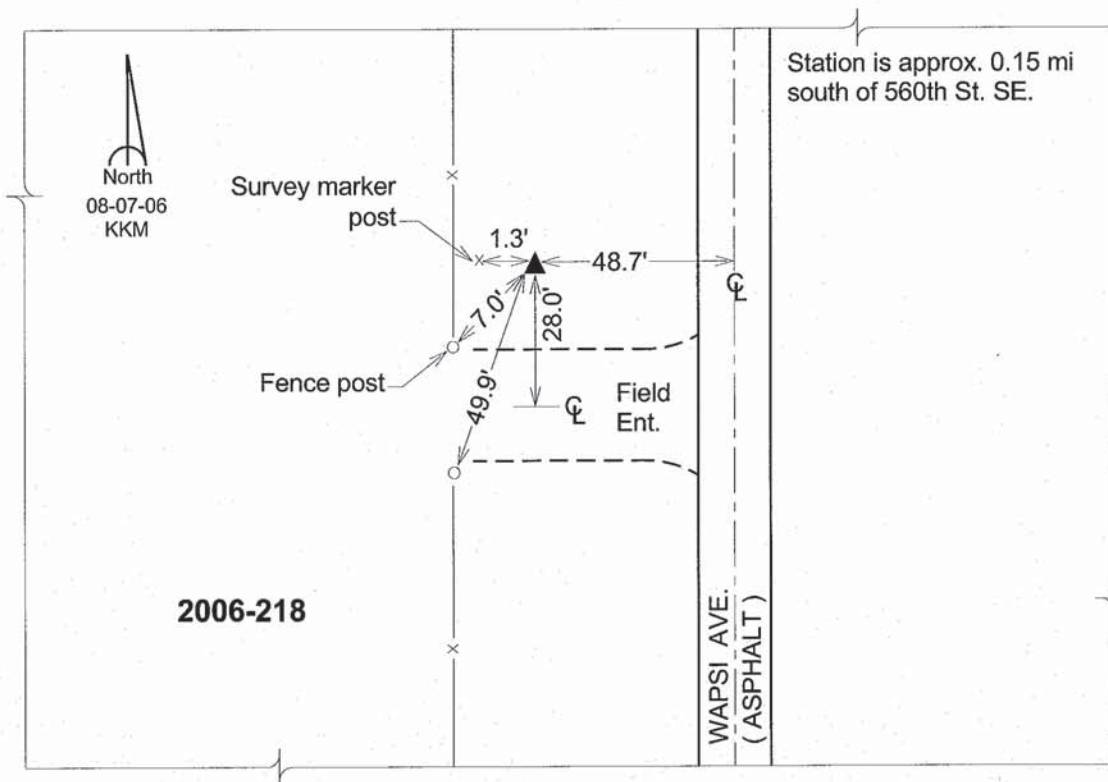
Latitude: **41°31'23.49587"N**

Longitude: **91°25'31.87426"W**

Mapping Angle: **1°21'59"**

Combination Scale Factor: **0.99993620**

**Monument Type:** Berntsen Top Security Rod Monument with a 2-1/2" dia. domed survey cap and permanent magnet encased in a 6" dia. PVC pipe with a NGS style aluminum access cover.



*This document was prepared by DCI and GBC for use by Johnson County, Iowa.*