

Johnson County, Iowa
 Iowa South Zone (1402)
 Horiz. Datum: NAD83(1996)
 Vert. Datum: NAVD 1988
 US Survey Feet
2006

Point Name: **219**

Designation: 2006-219 Johnson Co GPS Control Pt. (Set by DCI in 2006)

Northing: **542461.54**sft Easting: **2208833.60**sft

Orthometric Height: **712.18**sft Ellipsoid Height: **604.67**sft **Geoid03**

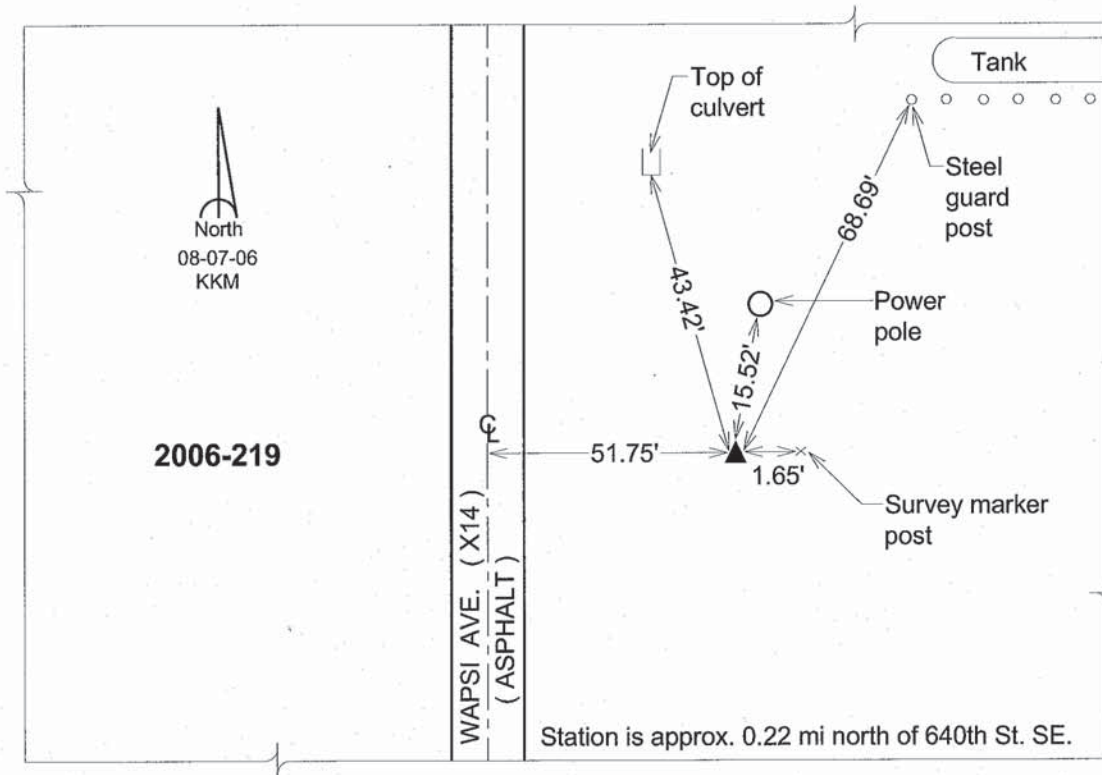
Latitude: **41°28'13.08844"N**

Longitude: **91°25'32.43020"W**

Mapping Angle: **1°21'59"**

Combination Scale Factor: **0.99993055**

Monument Type: Berntsen Top Security Rod Monument with a 2-1/2" dia. domed survey cap and permanent magnet encased in a 6" dia. PVC pipe with a NGS style aluminum access cover.



This document was prepared by DCI and GBC for use by Johnson County, Iowa.