

Johnson County, Iowa
Iowa South Zone (1402)
Horiz. Datum: NAD83(1996)
Vert. Datum: NAVD 1988
US Survey Feet
2006

Point Name: **221**

Designation: 2006-221 Johnson Co GPS Control Pt. (Set by DCI in 2006)

Northing: **592022.88sft** Easting: **2114464.14sft**

Orthometric Height: **772.29sft** Ellipsoid Height: **665.53sft** **Geoid03**

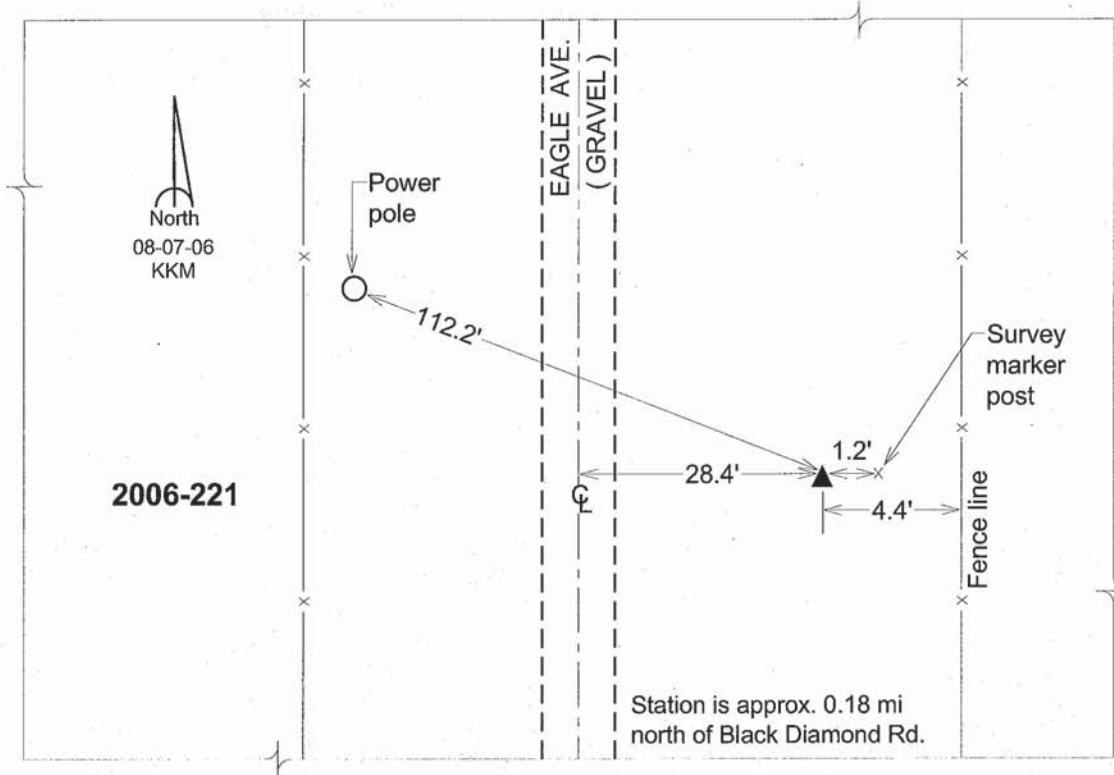
Latitude: **41°36'43.04681"N**

Longitude: **91°45'58.87206"W**

Mapping Angle: **1°08'31"**

Combination Scale Factor: **0.99994231**

Monument Type: Berntsen Top Security Rod Monument with a 2-1/2" dia. domed survey cap and permanent magnet encased in a 6" dia. PVC pipe with a NGS style aluminum access cover.



This document was prepared by DCI and GBC for use by Johnson County, Iowa.