

Johnson County, Iowa
Iowa South Zone (1402)
Horiz. Datum: NAD83(1996)
Vert. Datum: NAVD 1988
US Survey Feet
2006

Point Name: **222**

Designation: 2006-222 Johnson Co GPS Control Pt. (Set by DCI in 2006)

Northing: **654263.57sft** Easting: **2207517.02sft**

Orthometric Height: **849.92sft** Ellipsoid Height: **743.17sft** **Geoid03**

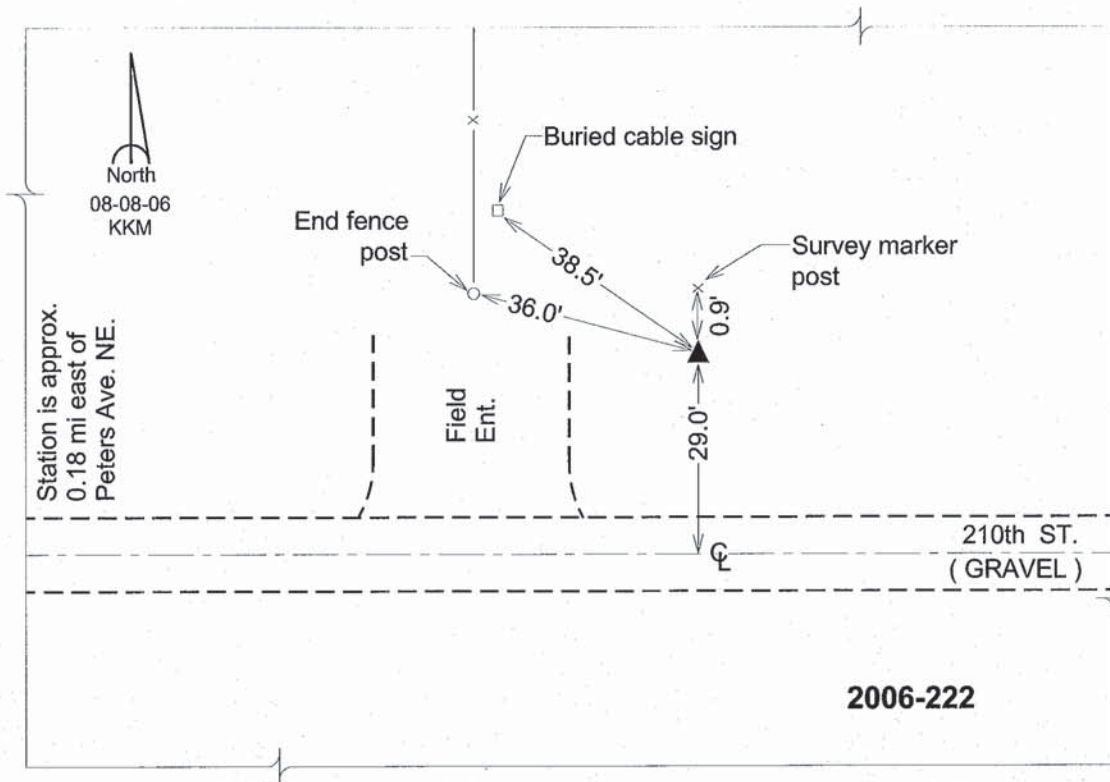
Latitude: **41°46'37.66386"N**

Longitude: **91°25'14.61618"W**

Mapping Angle: **1°22'11"**

Combination Scale Factor: **0.99996344**

Monument Type: Berntsen Top Security Rod Monument with a 2-1/2" dia. domed survey cap and permanent magnet encased in a 6" dia. PVC pipe with a NGS style aluminum access cover.



This document was prepared by DCI and GBC for use by Johnson County, Iowa.