

Johnson County, Iowa
Iowa South Zone (1402)
Horiz. Datum: NAD83(1996)
Vert. Datum: NAVD 1988
US Survey Feet
2006

Point Name: **224**

Designation: 2006-224 City of North Liberty GPS Control (Set by DCI in 2006)

Northing: **633240.77sft** Easting: **2148492.79sft**

Orthometric Height: **785.16sft** Ellipsoid Height: **678.51sft** **Geoid03**

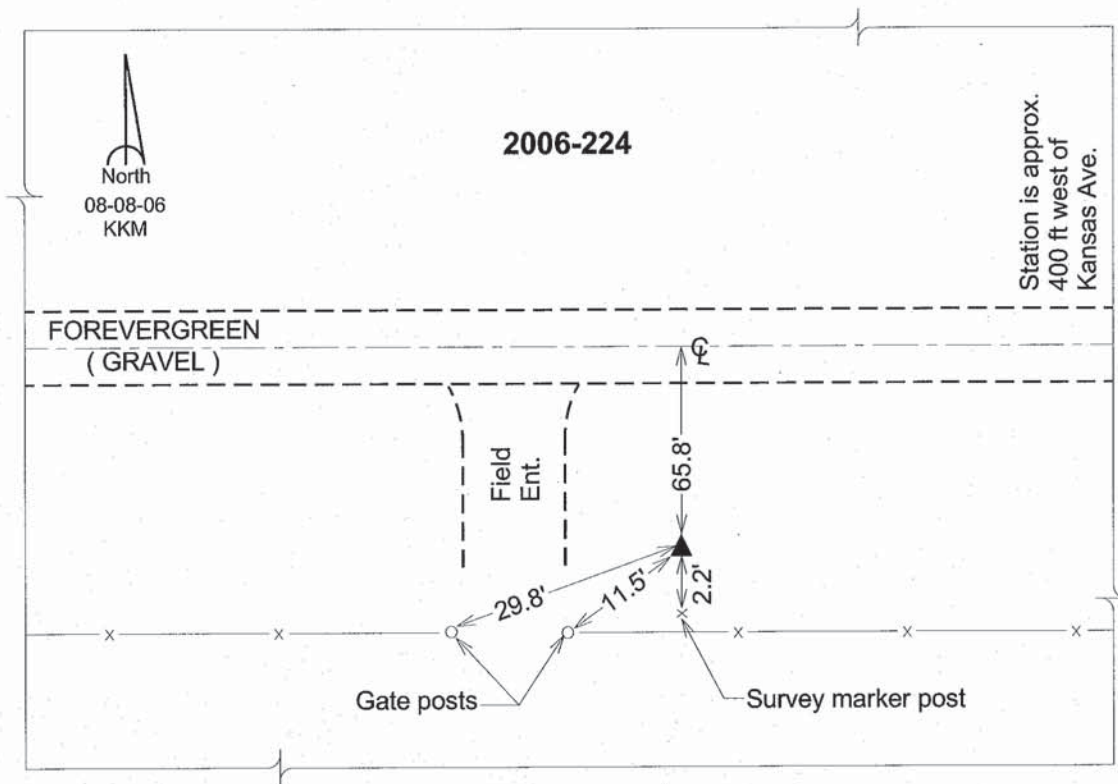
Latitude: **41°43'23.23189"N**

Longitude: **91°38'19.38558"W**

Mapping Angle: **1°13'34"**

Combination Scale Factor: **0.99995749**

Monument Type: Berntsen Top Security Rod Monument with a 2-1/2" dia. domed survey cap and permanent magnet encased in a 6" dia. PVC pipe with a NGS style aluminum access cover.



This document was prepared by DCI and GBC for use by Johnson County, Iowa.