

Johnson County, Iowa
 Iowa South Zone (1402)
 Horiz. Datum: NAD83(1996)
 Vert. Datum: NAVD 1988
 US Survey Feet
2006

Point Name: **225**

Designation: 2006-225 City of North Liberty GPS Control (Set by DCI in 2006)

Northing: **644109.60sft** Easting: **2164818.28sft**

Orthometric Height: **840.85sft** Ellipsoid Height: **734.20sft** **Geoid03**

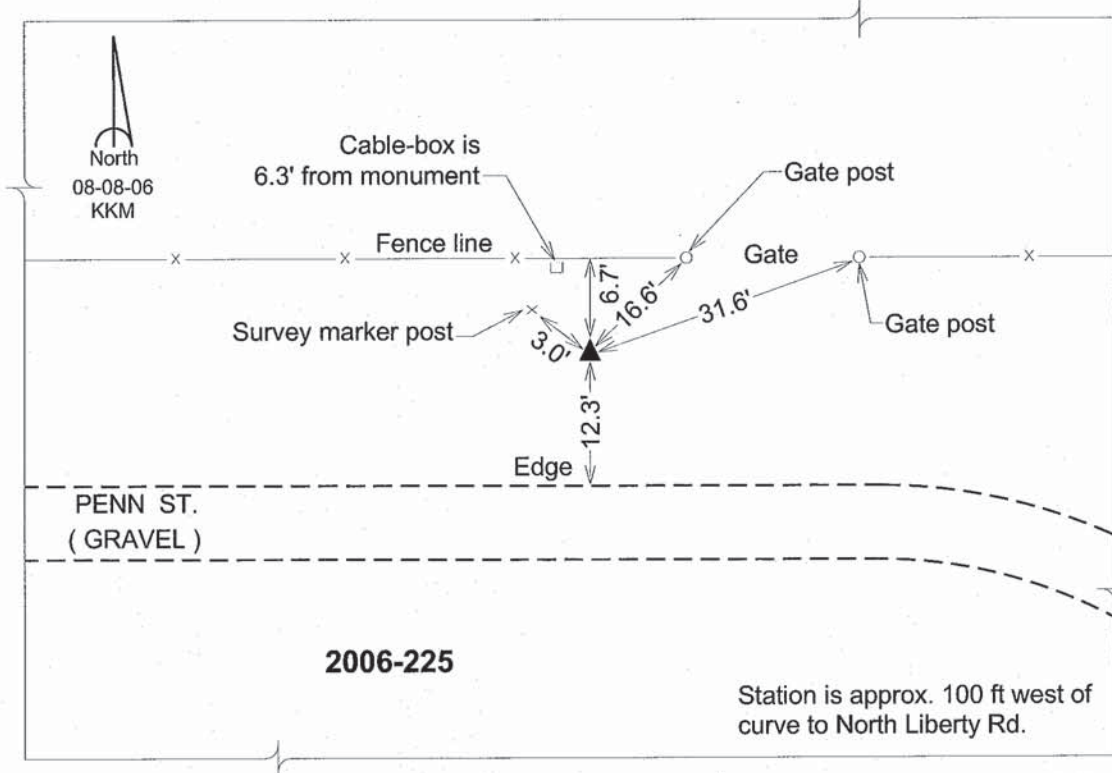
Latitude: **41°45'07.07720"N**

Longitude: **91°34'40.98383"W**

Mapping Angle: **1°15'58"**

Combination Scale Factor: **0.99995955**

Monument Type: Berntsen Top Security Rod Monument with a 2-1/2" dia. domed survey cap and permanent magnet encased in a 6" dia. PVC pipe with a NGS style aluminum access cover.



This document was prepared by DCI and GBC for use by Johnson County, Iowa.