

Johnson County, Iowa
Iowa South Zone (1402)
Horiz. Datum: NAD83(1996)
Vert. Datum: NAVD 1988
US Survey Feet
2006

Point Name: **227**

Designation: 2006-227 City of Coralville GPS Control Pt (Set by DCI in 2006)

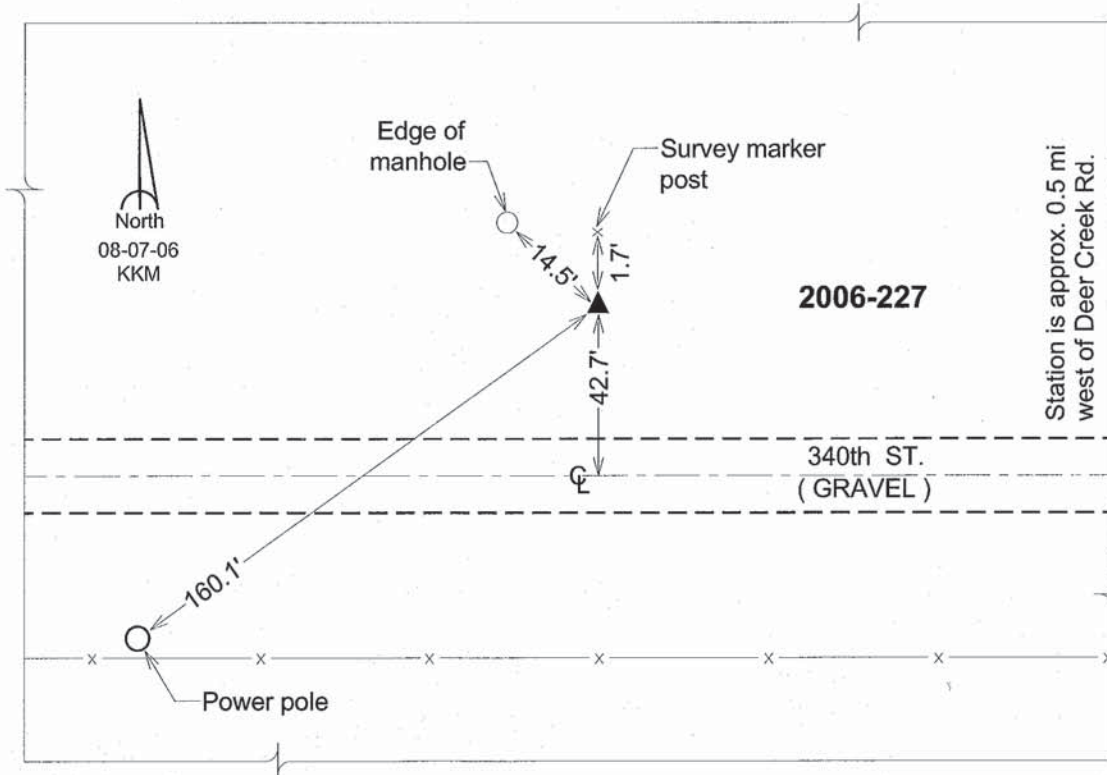
Northing: **621741.72sft** Easting: **2152018.01sft**

Orthometric Height: **678.73sft** Ellipsoid Height: **571.96sft** **Geoid03**

Latitude: **41°41'28.90523"N** Longitude: **91°37'36.17409"W**

Mapping Angle: **1°14'02"** Combination Scale Factor: **0.99995767**

Monument Type: Berntsen Top Security Rod Monument with a 2-1/2" dia. domed survey cap and permanent magnet encased in a 6" dia. PVC pipe with a NGS style aluminum access cover.



This document was prepared by DCI and GBC for use by Johnson County, Iowa.