

Johnson County, Iowa
 Iowa South Zone (1402)
 Horiz. Datum: NAD83(1996)
 Vert. Datum: NAVD 1988
 US Survey Feet
2006

Point Name: **229**

Designation: 2006-229 City of Coralville GPS Control Pt (Set by DCI in 2006)

Northing: **628918.08sft** Easting: **2168921.08sft**

Orthometric Height: **807.00sft** Ellipsoid Height: **700.21sft** **Geoid03**

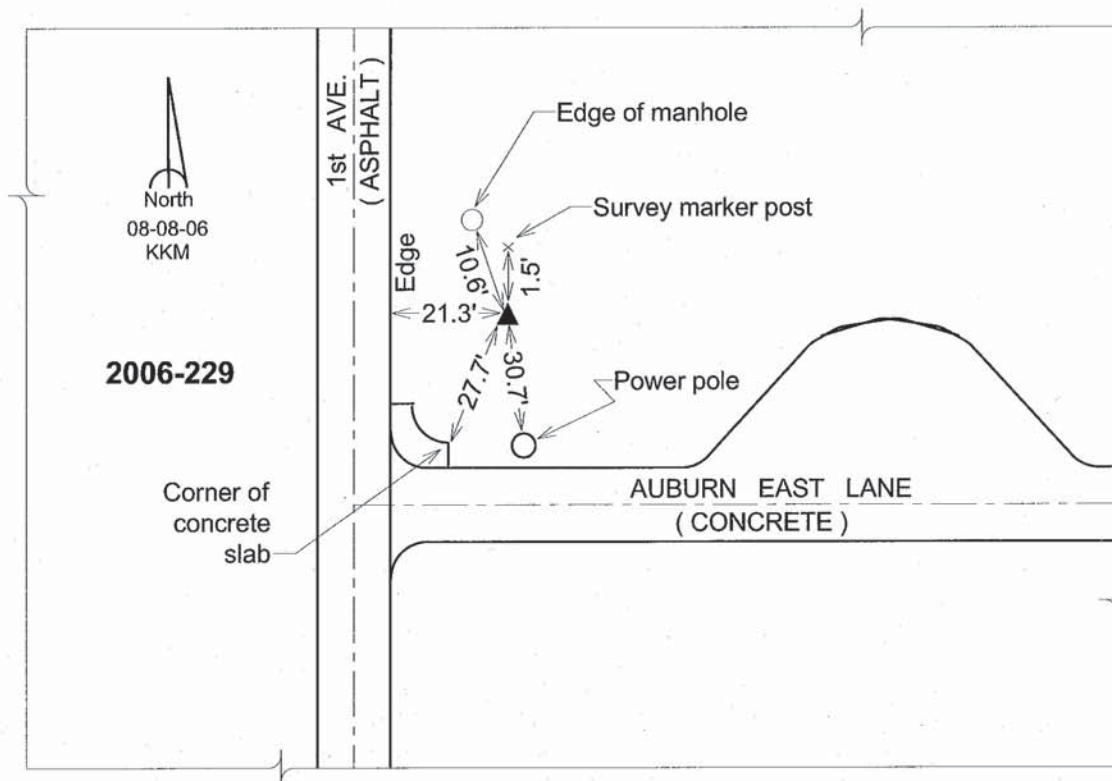
Latitude: **41°42'36.13142"N**

Longitude: **91°33'51.32877"W**

Mapping Angle: **1°16'30"**

Combination Scale Factor: **0.99995440**

Monument Type: Berntsen Top Security Rod Monument with a 2-1/2" dia. domed survey cap and permanent magnet encased in a 6" dia. PVC pipe with a NGS style aluminum access cover.



This document was prepared by DCI and GBC for use by Johnson County, Iowa.