

**Johnson County, Iowa**  
Iowa South Zone (1402)  
Horiz. Datum: NAD83(1996)  
Vert. Datum: NAVD 1988  
US Survey Feet  
**2006**

Point Name: **231**

**Designation:** 2006-231 City of Iowa City GPS Control Pt (Set by DCI in 2006)

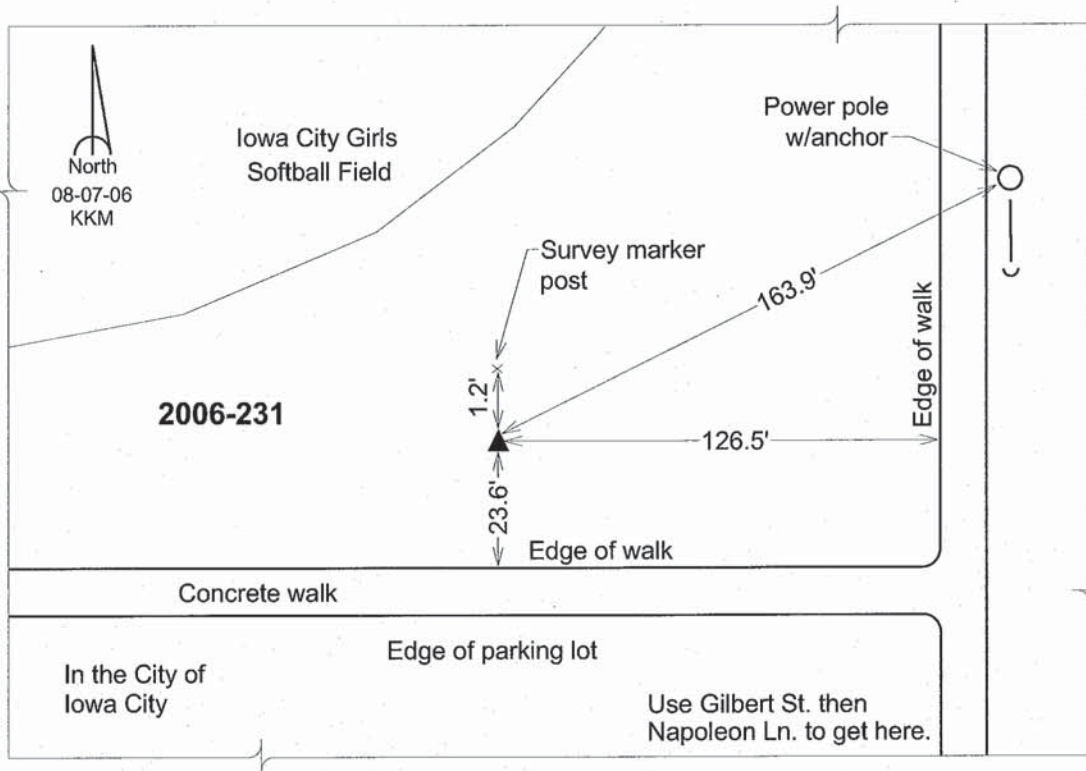
Northing: **600758.53sft** Easting: **2178847.45sft**

Orthometric Height: **652.83sft** Ellipsoid Height: **545.81sft** **Geoid03**

Latitude: **41°37'55.79366"N** Longitude: **91°31'48.89429"W**

Mapping Angle: **1°17'51"** Combination Scale Factor: **0.99995061**

**Monument Type:** Berntsen Top Security Rod Monument with a 2-1/2" dia. domed survey cap and permanent magnet encased in a 6" dia. PVC pipe with a NGS style aluminum access cover.



*This document was prepared by DCI and GBC for use by Johnson County, Iowa.*