

Johnson County, Iowa
Iowa South Zone (1402)
Horiz. Datum: NAD83(1996)
Vert. Datum: NAVD 1988
US Survey Feet
2006

Point Name: **232**

Designation: 2006-232 City of Iowa City GPS Control Pt (Set by DCI in 2006)

Northing: **609214.35sft** Easting: **2152009.06sft**

Orthometric Height: **774.64sft** Ellipsoid Height: **667.78sft** **Geoid03**

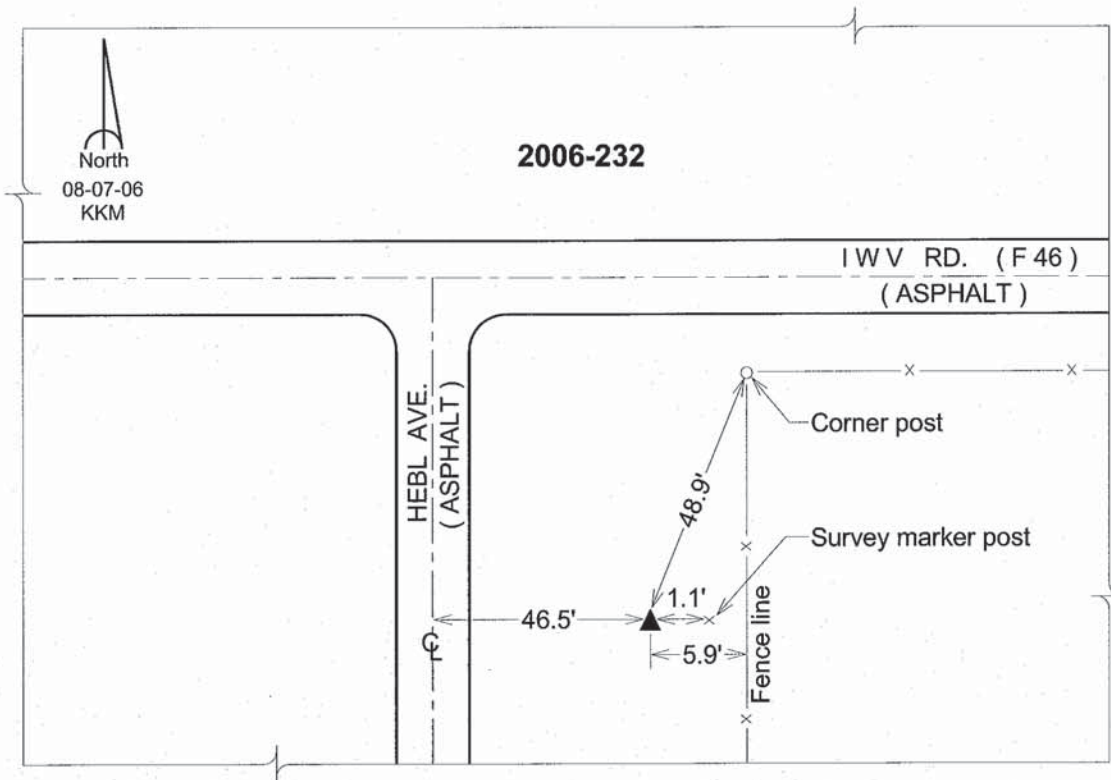
Latitude: **41°39'25.16992"N**

Longitude: **91°37'39.84593"W**

Mapping Angle: **1°14'00"**

Combination Scale Factor: **0.99994815**

Monument Type: Berntsen Top Security Rod Monument with a 2-1/2" dia. domed survey cap and permanent magnet encased in a 6" dia. PVC pipe with a NGS style aluminum access cover.



This document was prepared by DCI and GBC for use by Johnson County, Iowa.