

Johnson County, Iowa
Iowa South Zone (1402)
Horiz. Datum: NAD83(1996)
Vert. Datum: NAVD 1988
US Survey Feet
2006

Point Name: **233**

Designation: 2006-233 City of Iowa City GPS Control Pt (Set by DCI in 2006)

Northing: **606706.33sft** Easting: **2152457.25sft**

Orthometric Height: **780.50sft** Ellipsoid Height: **673.62sft** **Geoid03**

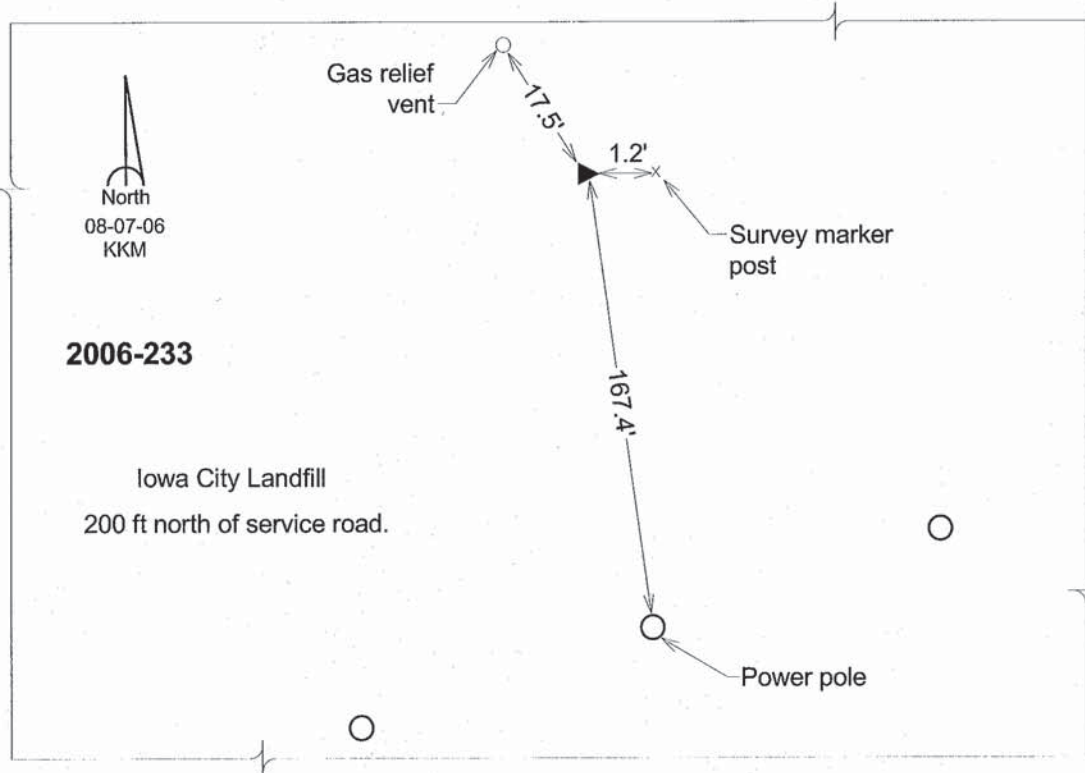
Latitude: **41°39'00.30185"N**

Longitude: **91°37'34.65451"W**

Mapping Angle: **1°14'03"**

Combination Scale Factor: **0.99994692**

Monument Type: Berntsen Top Security Rod Monument with a 2-1/2" dia. domed survey cap and permanent magnet encased in a 6" dia. PVC pipe with a NGS style aluminum access cover.



This document was prepared by DCI and GBC for use by Johnson County, Iowa.