

Johnson County, Iowa
 Iowa South Zone (1402)
 Horiz. Datum: NAD83(1996)
 Vert. Datum: NAVD 1988
 US Survey Feet
2006

Point Name: **235**

Designation: 2006-235 City of Iowa City GPS Control Pt (Set by DCI in 2006)

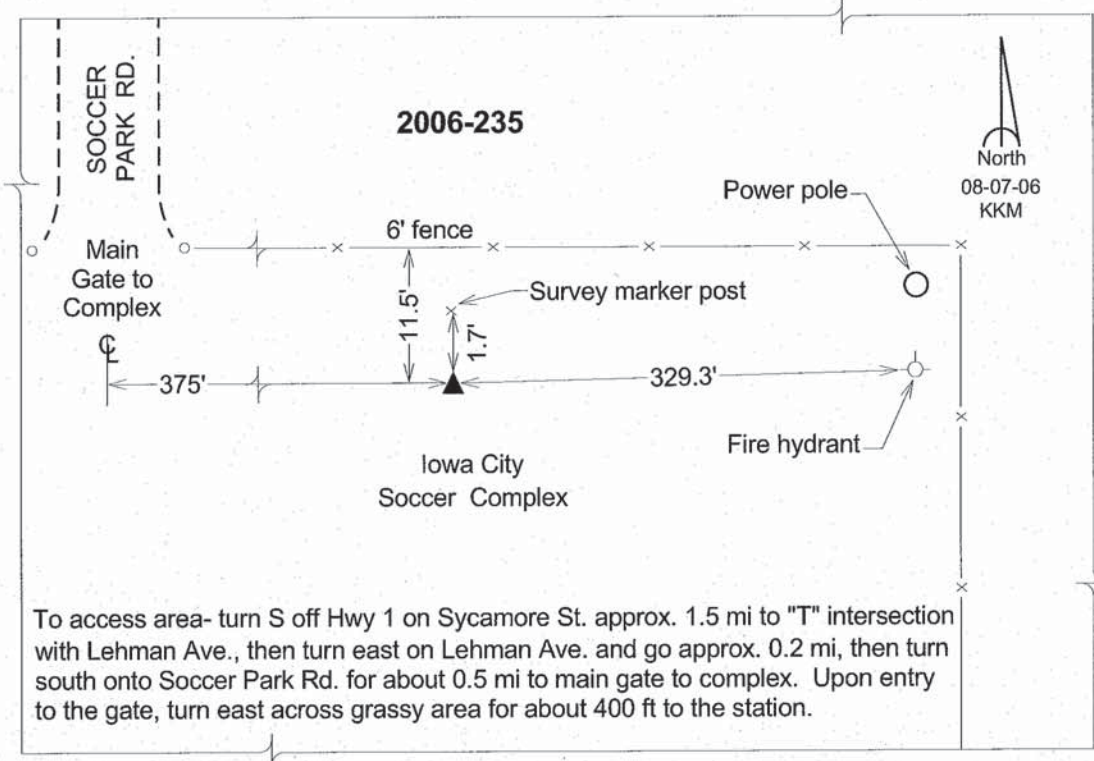
Northing: **593953.21sft** Easting: **2185002.57sft**

Orthometric Height: **678.92sft** Ellipsoid Height: **571.83sft** **Geoid03**

Latitude: **41°36'47.19126"N** Longitude: **91°30'29.91171"W**

Mapping Angle: **1°18'43"** Combination Scale Factor: **0.99994692**

Monument Type: Berntsen Top Security Rod Monument with a 2-1/2" dia. domed survey cap and permanent magnet encased in a 6" dia. PVC pipe with a NGS style aluminum access cover.



This document was prepared by DCI and GBC for use by Johnson County, Iowa.