

**Johnson County, Iowa**  
Iowa South Zone (1402)  
Horiz. Datum: NAD83(1996)  
Vert. Datum: NAVD 1988  
US Survey Feet  
**2006**

Point Name: **236**

**Designation:** 2006-236 City of Iowa City GPS Control Pt (Set by DCI in 2006)

Northing: **621441.40sft** Easting: **2188836.55sft**

Orthometric Height: **729.61sft** Ellipsoid Height: **622.71sft** **Geoid03**

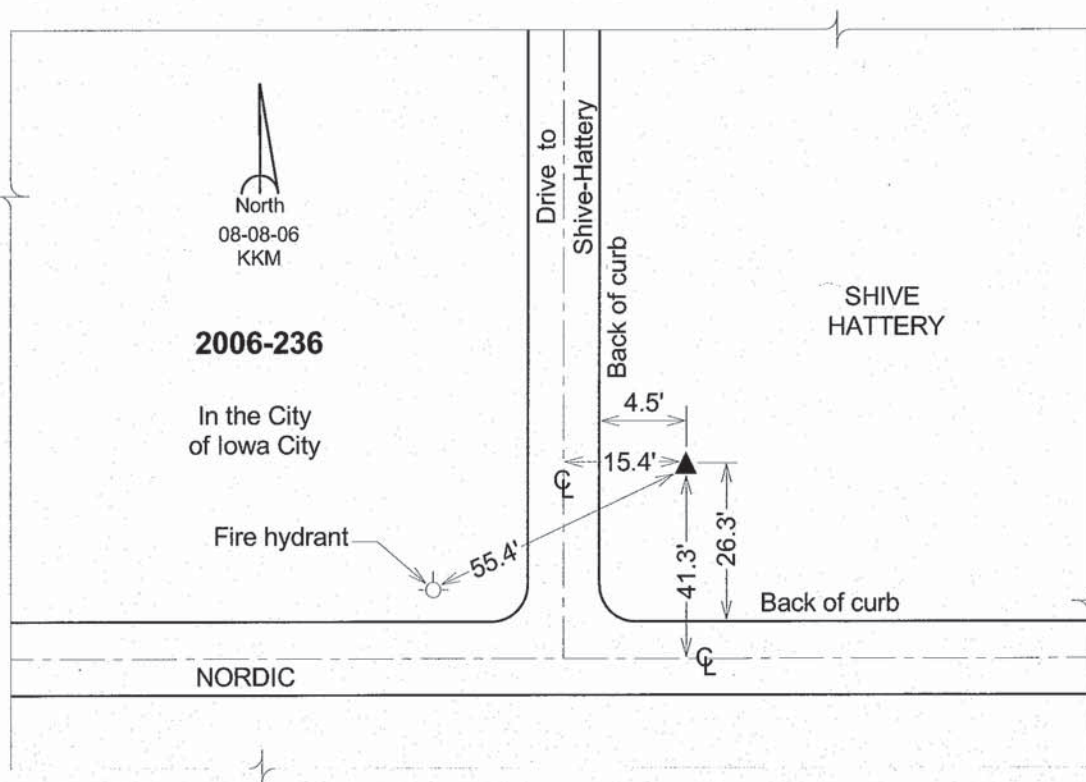
Latitude: **41°41'17.82407"N**

Longitude: **91°29'31.09757"W**

Mapping Angle: **1°19'22"**

Combination Scale Factor: **0.99995479**

**Monument Type:** Berntsen Top Security Rod Monument with a 2-1/2" dia. domed survey cap and permanent magnet encased in a 6" dia. PVC pipe with a NGS style aluminum access cover.



*This document was prepared by DCI and GBC for use by Johnson County, Iowa.*