

**Johnson County, Iowa**  
 Iowa South Zone (1402)  
 Horiz. Datum: **NAD83(NA2011)**  
 Vert. Datum: NAVD 1988  
 US Survey Feet  
**2013**

Point Name: **2**

**Designation:** 92-02 Johnson County GPS Control Point (Set by ASI in 1992)

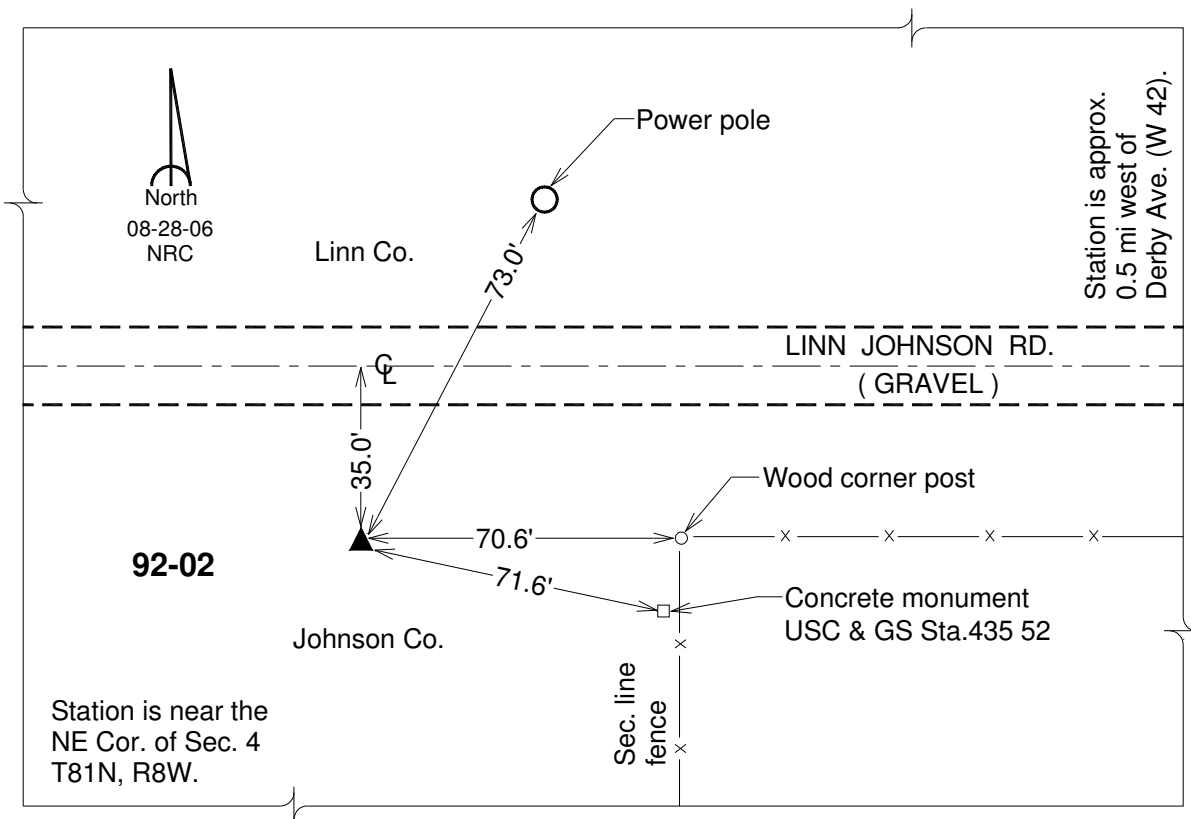
Northing: **683020.76**sft    Easting: **2110729.21**sft

Orthometric Height: **806.32**sft    Ellipsoid Height: **700.52**sft    **Geoid12A**

Latitude: **N41°51'42.60988"**                      Longitude: **W91°46'24.25390"**

Mapping Angle: **1°08'14"**                      Combination Scale Factor: **0.999981457**

**Monument Type:** 5/8" dia. driven aluminum rod with a 2-1/2" dia. aluminum cap and permanent magnet encased in a 6" dia. PVC pipe with an aluminum access cover.



*This document was prepared by DCI on 03-05-2013 for use by Johnson County, Iowa.*