

Johnson County, Iowa
Iowa South Zone (1402)
Horiz. Datum: **NAD83(NA2011)**
Vert. Datum: NAVD 1988
US Survey Feet
2013

Point Name: 7

Designation: 92-07 Johnson County GPS Control Point (Set by ASI in 1992)

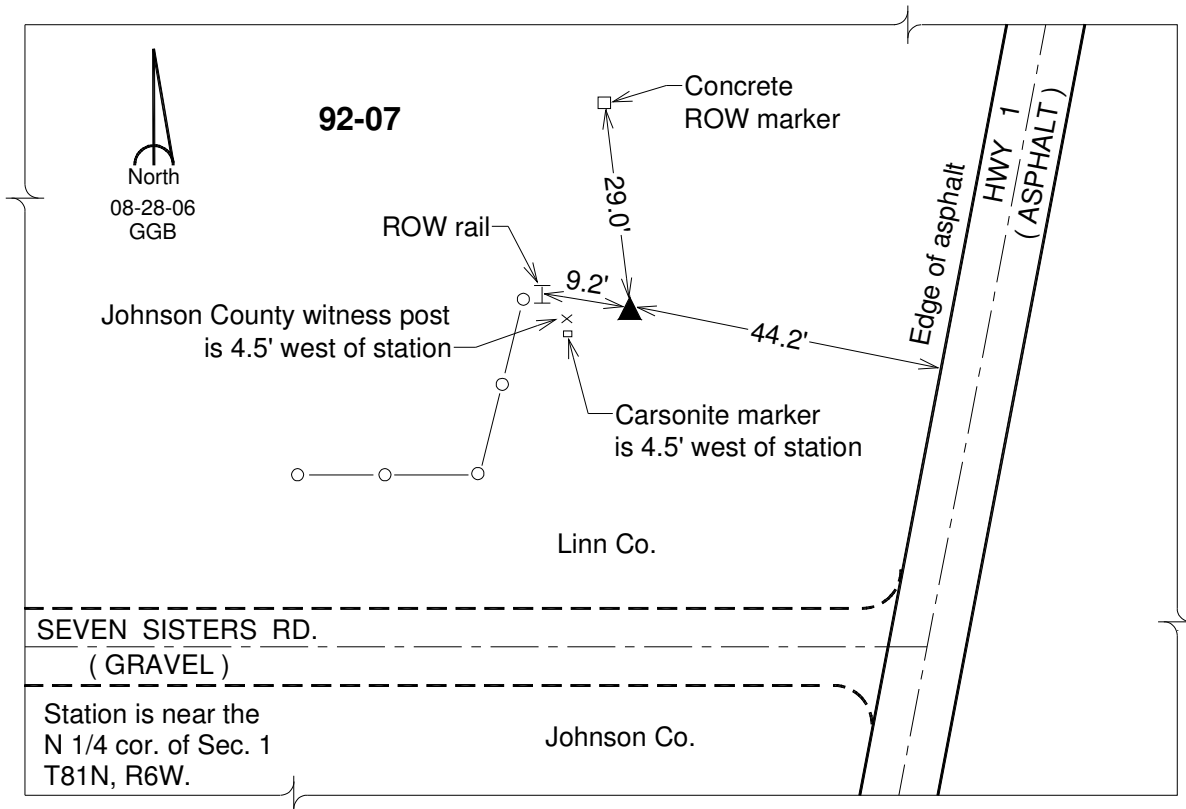
Northing: **683973.18sft** Easting: **2186981.78sft**

Orthometric Height: **865.74sft** Ellipsoid Height: **759.00sft** **Geoid12A**

Latitude: **N41°51'35.85289"** Longitude: **W91°29'36.52667"**

Mapping Angle: **1°19'18"** Combination Scale Factor: **0.999978289**

Monument Type: 5/8" dia. driven aluminum rod with a 2-1/2" dia. aluminum cap and permanent magnet encased in a 6" dia. PVC pipe with an aluminum access cover.



This document was prepared by DCI on 03-05-2013 for use by Johnson County, Iowa.