

Johnson County, Iowa
Iowa South Zone (1402)
Horiz. Datum: **NAD83(NA2011)**
Vert. Datum: NAVD 1988
US Survey Feet
2013

Point Name: **14**

Designation: 92-14 Johnson County GPS Control Point (Set by ASI in 1992)

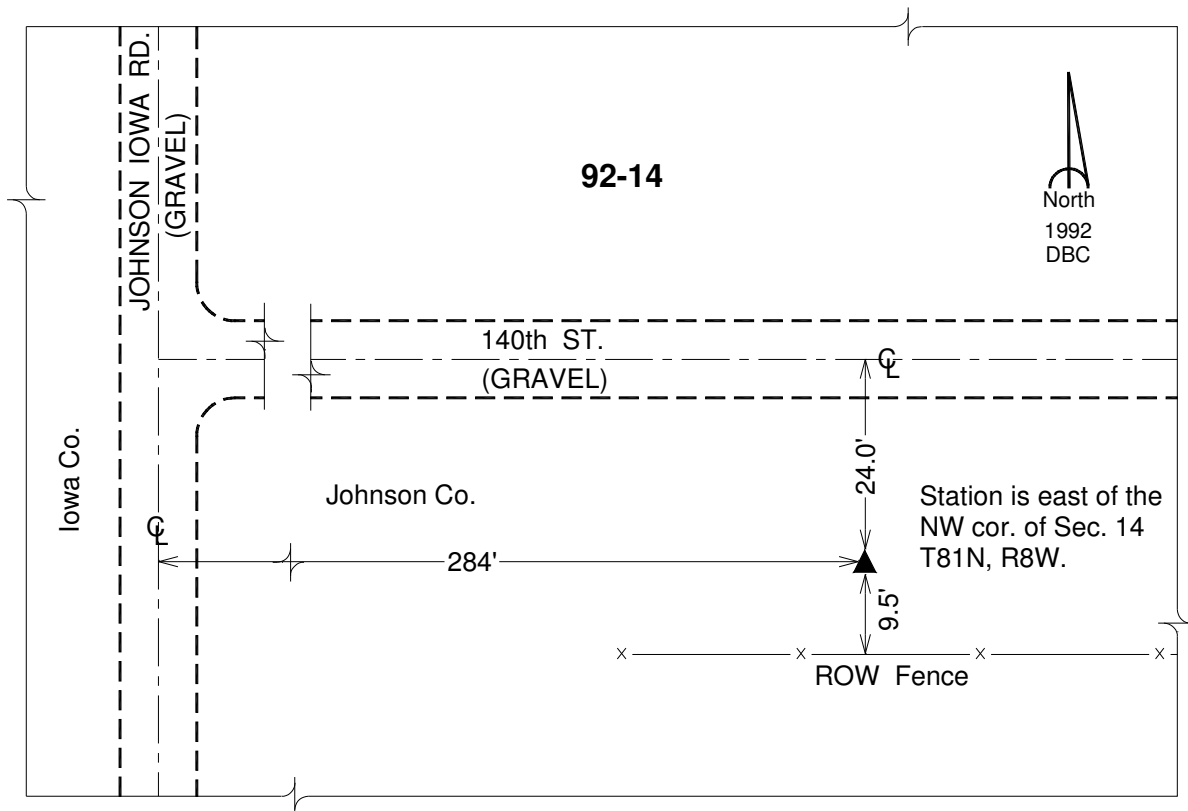
Northing: **672099.60sft** Easting: **2095513.00sft**

Orthometric Height: **861.38sft** Ellipsoid Height: **755.68sft** **Geoid12A**

Latitude: **N41°49'57.67449"** Longitude: **W91°49'48.07494"**

Mapping Angle: **1°06'00"** Combination Scale Factor: **0.999973079**

Monument Type: 5/8" dia. driven aluminum rod with a 2-1/2" dia. aluminum cap and permanent magnet encased in a 6" dia. PVC pipe with an aluminum access cover.



This document was prepared by DCI on 03-05-2013 for use by Johnson County, Iowa.