

Johnson County, Iowa
Iowa South Zone (1402)
Horiz. Datum: **NAD83(NA2011)**
Vert. Datum: NAVD 1988
US Survey Feet
2013

Point Name: **20**

Designation: 92-20 Johnson County GPS Control Point (Set by ASI in 1992)

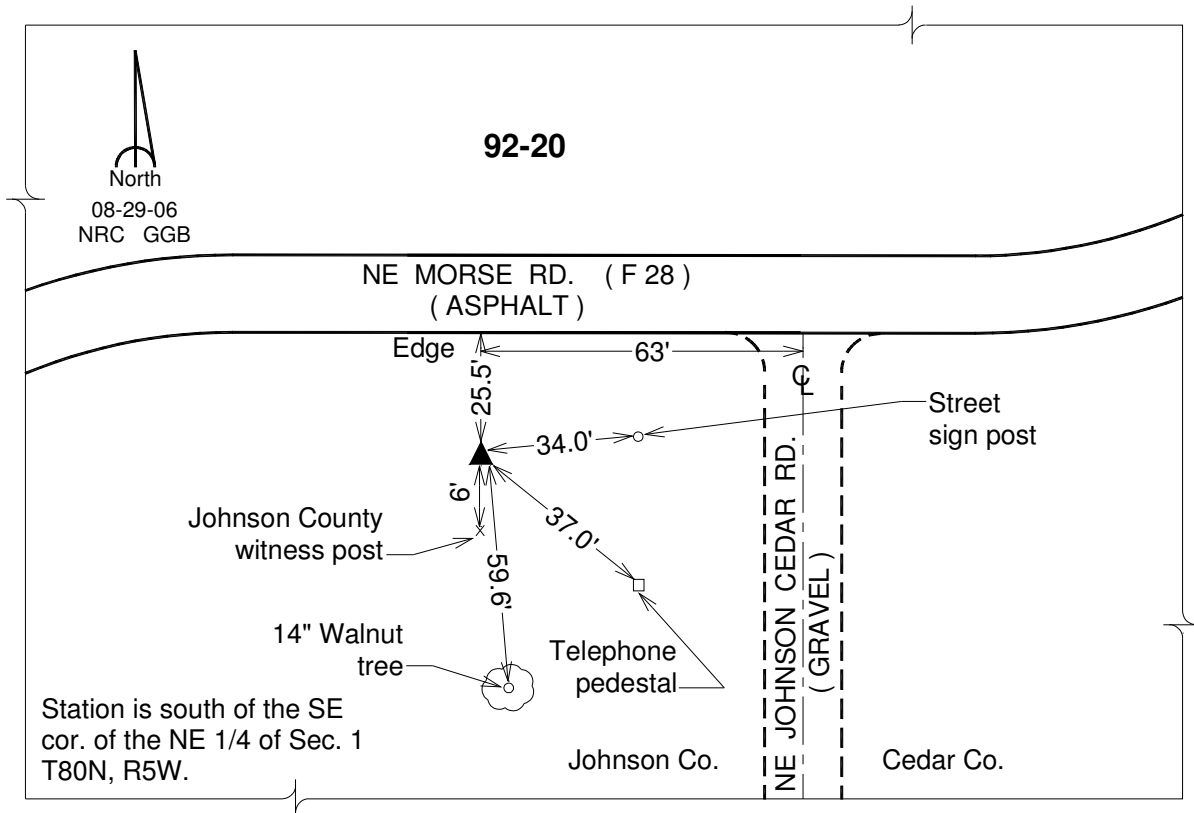
Northing: **651628.70**sft Easting: **2222471.91**sft

Orthometric Height: **825.17**sft Ellipsoid Height: **718.18**sft **Geoid12A**

Latitude: **N41°46'08.06305"** Longitude: **W91°21'58.15189"**

Mapping Angle: **1°24'20"** Combination Scale Factor: **0.999963202**

Monument Type: 5/8" dia. driven aluminum rod with a 2-1/2" dia. aluminum cap and permanent magnet encased in a 6" dia. PVC pipe with an aluminum access cover.



This document was prepared by DCI on 03-05-2013 for use by Johnson County, Iowa.