

Johnson County, Iowa
 Iowa South Zone (1402)
 Horiz. Datum: **NAD83(NA2011)**
 Vert. Datum: NAVD 1988
 US Survey Feet
2013

Point Name: **24**

Designation: 92-24 Johnson County GPS Control Point (Set by ASI in 1992)

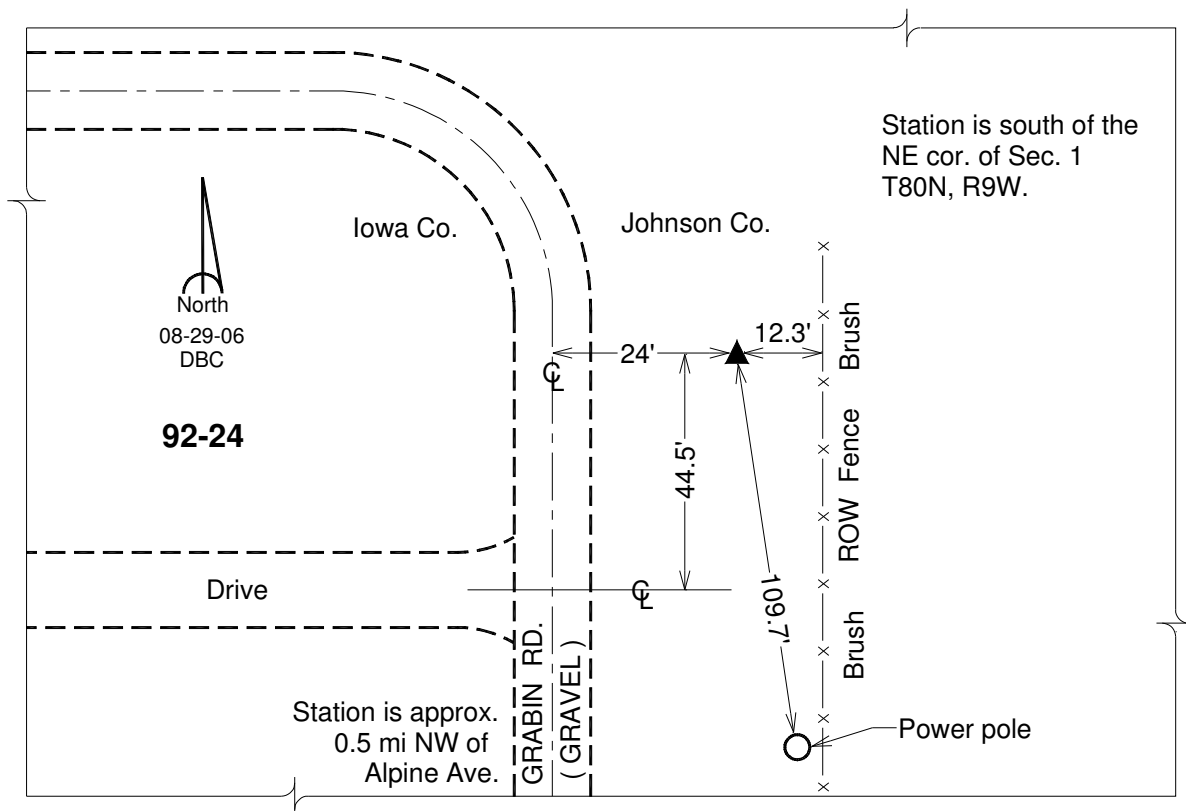
Northing: **650423.70**sft Easting: **2095564.05**sft

Orthometric Height: **757.57**sft Ellipsoid Height: **651.55**sft **Geoid12A**

Latitude: **N41°46'23.56350"** Longitude: **W91°49'52.89315"**

Mapping Angle: **1°05'57"** Combination Scale Factor: **0.999967129**

Monument Type: 5/8" dia. driven aluminum rod with a 2-1/2" dia. aluminum cap and permanent magnet encased in a 6" dia. PVC pipe with an aluminum access cover.



This document was prepared by DCI on 03-05-2013 for use by Johnson County, Iowa.