

Johnson County, Iowa
Iowa South Zone (1402)
Horiz. Datum: **NAD83(NA2011)**
Vert. Datum: NAVD 1988
US Survey Feet
2013

Point Name: **25**

Designation: 92-25 Johnson County GPS Control Point (Set by ASI in 1992)

Northing: **640082.04**sft Easting: **2095465.57**sft

Orthometric Height: **872.67**sft Ellipsoid Height: **766.54**sft **Geoid12A**

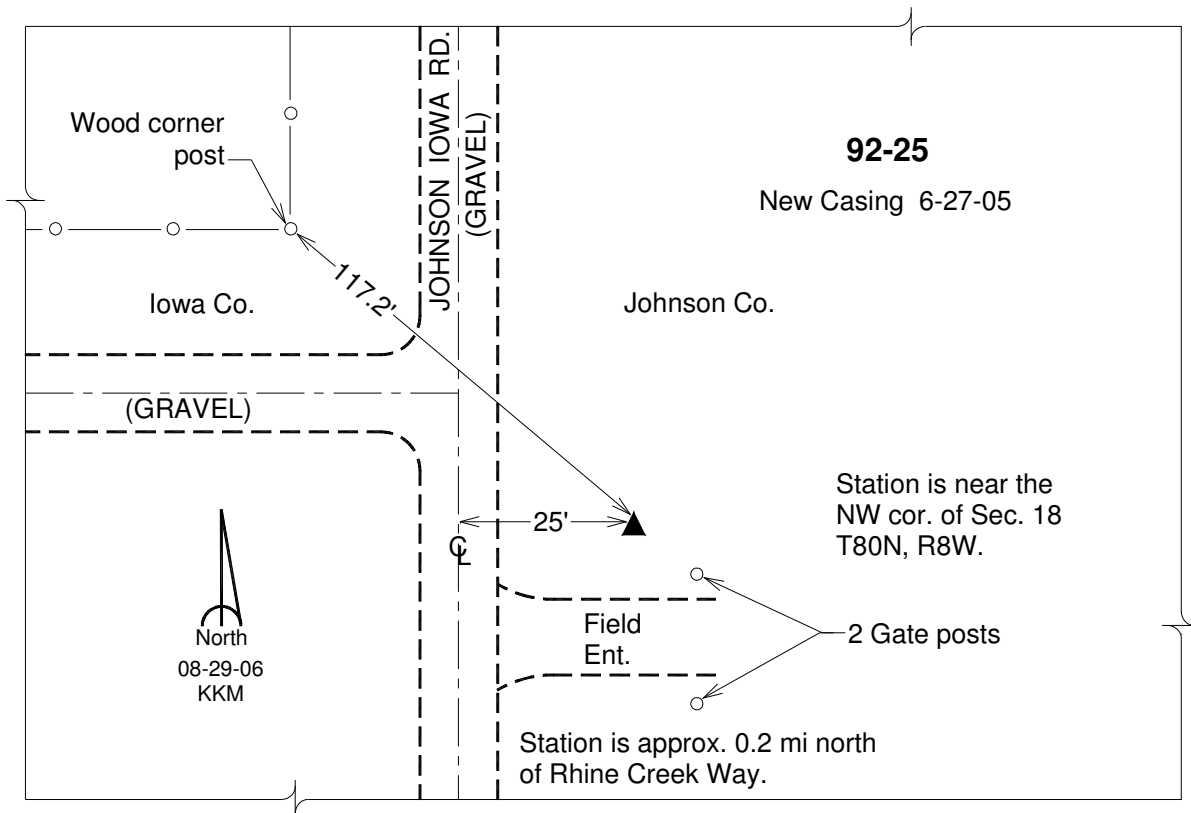
Latitude: **N41°44'41.43200"**

Longitude: **W91°49'56.80895"**

Mapping Angle: **1°05'54"**

Combination Scale Factor: **0.999956816**

Monument Type: 5/8" dia. driven aluminum rod with a 2-1/2" dia. aluminum cap and permanent magnet encased in a 6" dia. PVC pipe with an aluminum access cover.



This document was prepared by DCI on 03-05-2013 for use by Johnson County, Iowa.