

**Johnson County, Iowa**  
Iowa South Zone (1402)  
Horiz. Datum: **NAD83(NA2011)**  
Vert. Datum: NAVD 1988  
US Survey Feet  
**2013**

Point Name: **29**

**Designation:** 92-29 Johnson County GPS Control Point (Set by ASI in 1992)

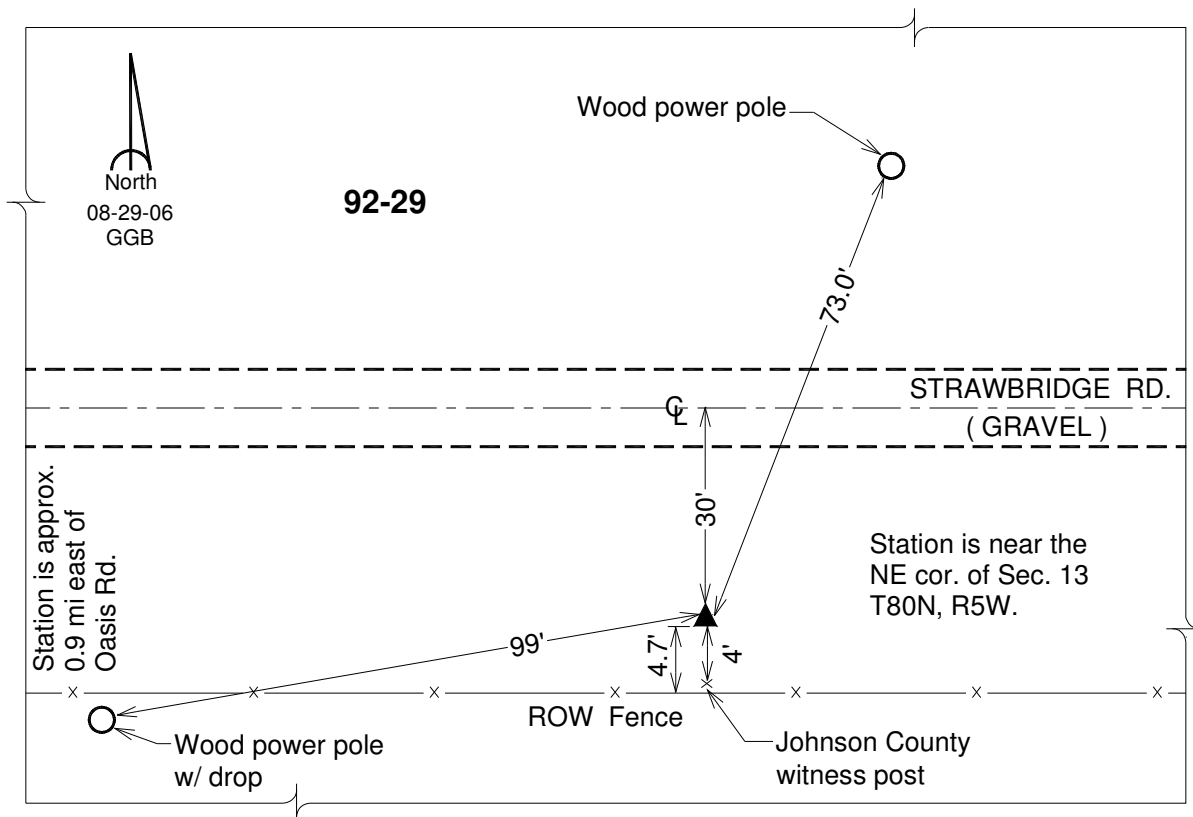
Northing: **642419.09sft**    Easting: **2222246.16sft**

Orthometric Height: **830.87sft**    Ellipsoid Height: **723.85sft**    **Geoid12A**

Latitude: **N41°44'37.16002"**    Longitude: **W91°22'04.10885"**

Mapping Angle: **1°24'16"**    Combination Scale Factor: **0.999958657**

**Monument Type:** 5/8" dia. driven aluminum rod with a 2-1/2" dia. aluminum cap and permanent magnet encased in a 6" dia. PVC pipe with an aluminum access cover.



*This document was prepared by DCI on 03-05-2013 for use by Johnson County, Iowa.*