

Johnson County, Iowa
Iowa South Zone (1402)
Horiz. Datum: **NAD83(NA2011)**
Vert. Datum: NAVD 1988
US Survey Feet
2013

Point Name: **33**

Designation: 92-33 Johnson County GPS Control Point (Set by ASI in 1992)

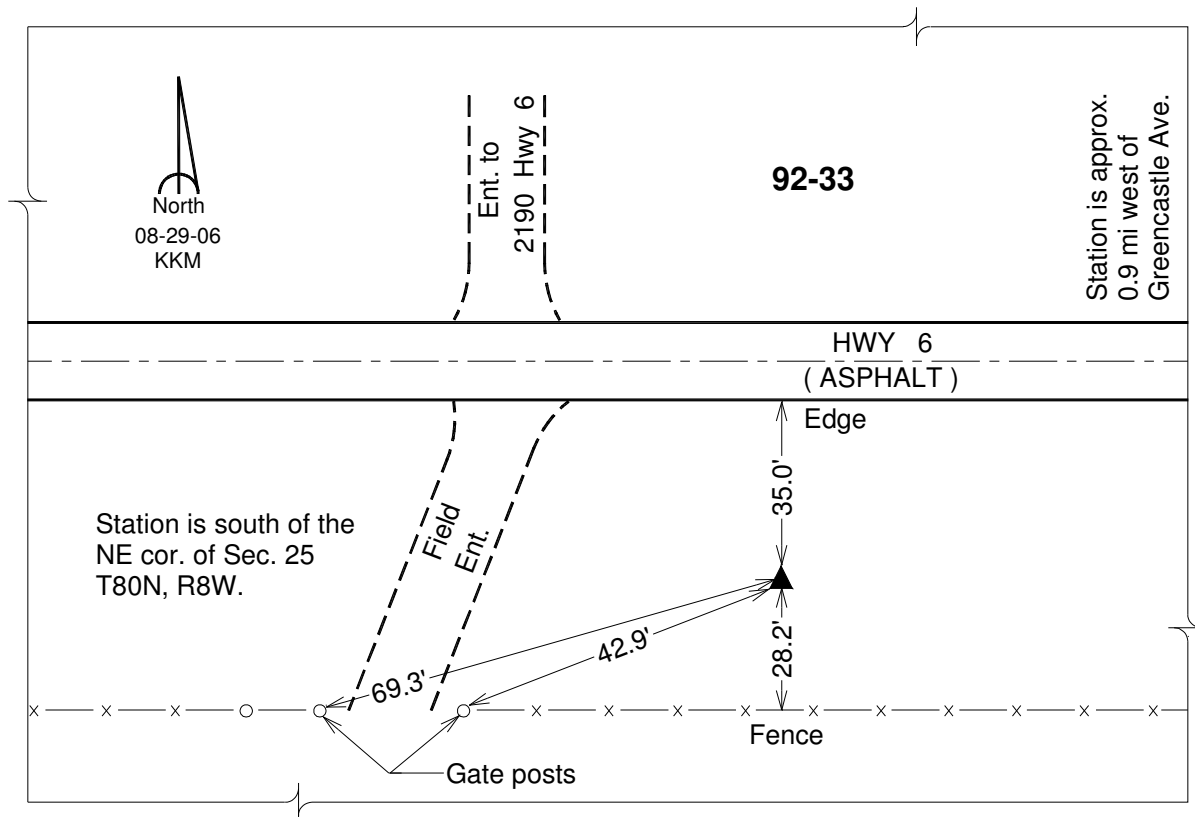
Northing: **629762.08sft** Easting: **2127223.83sft**

Orthometric Height: **726.32sft** Ellipsoid Height: **619.68sft** **Geoid12A**

Latitude: **N41°42'53.27339"** Longitude: **W91°43'00.74509"**

Mapping Angle: **1°10'28"** Combination Scale Factor: **0.999958982**

Monument Type: 5/8" dia. driven aluminum rod with a 2-1/2" dia. aluminum cap and permanent magnet encased in a 6" dia. PVC pipe with an aluminum access cover.



This document was prepared by DCI on 03-05-2013 for use by Johnson County, Iowa.