

Johnson County, Iowa
 Iowa South Zone (1402)
 Horiz. Datum: **NAD83(NA2011)**
 Vert. Datum: NAVD 1988
 US Survey Feet
2013

Point Name: **34**

Designation: 92-34 Johnson County GPS Control Point (Set by ASI in 1992)

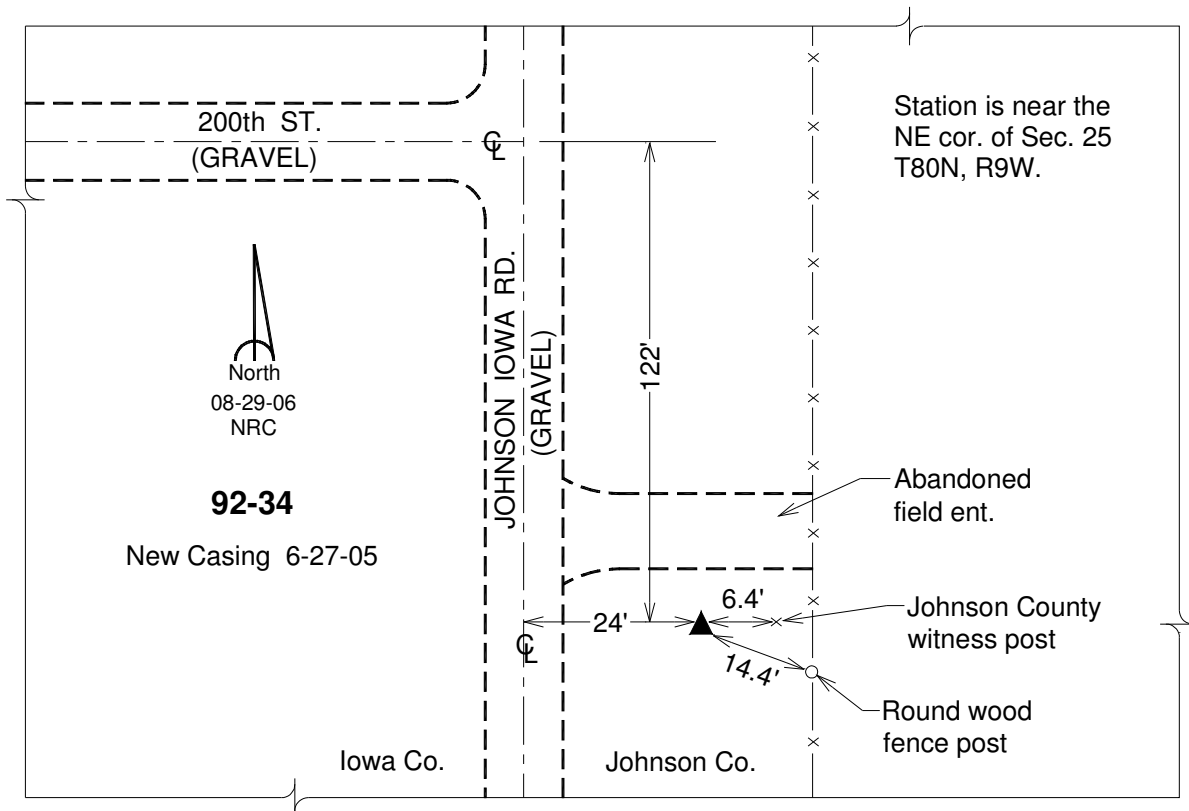
Northing: **629390.22sft** Easting: **2095377.63sft**

Orthometric Height: **787.26sft** Ellipsoid Height: **681.01sft** **Geoid12A**

Latitude: **N41°42'55.83868"** Longitude: **W91°50'00.67081"**

Mapping Angle: **1°05'52"** Combination Scale Factor: **0.999956167**

Monument Type: 5/8" dia. driven aluminum rod with a 2-1/2" dia. aluminum cap and permanent magnet encased in a 6" dia. PVC pipe with an aluminum access cover.



This document was prepared by DCI on 03-05-2013 for use by Johnson County, Iowa.