

**Johnson County, Iowa**  
Iowa South Zone (1402)  
Horiz. Datum: **NAD83(NA2011)**  
Vert. Datum: NAVD 1988  
US Survey Feet  
**2013**

Point Name: **38**

**Designation:** 92-38 Johnson County GPS Control Point (Set by ASI in 1992)

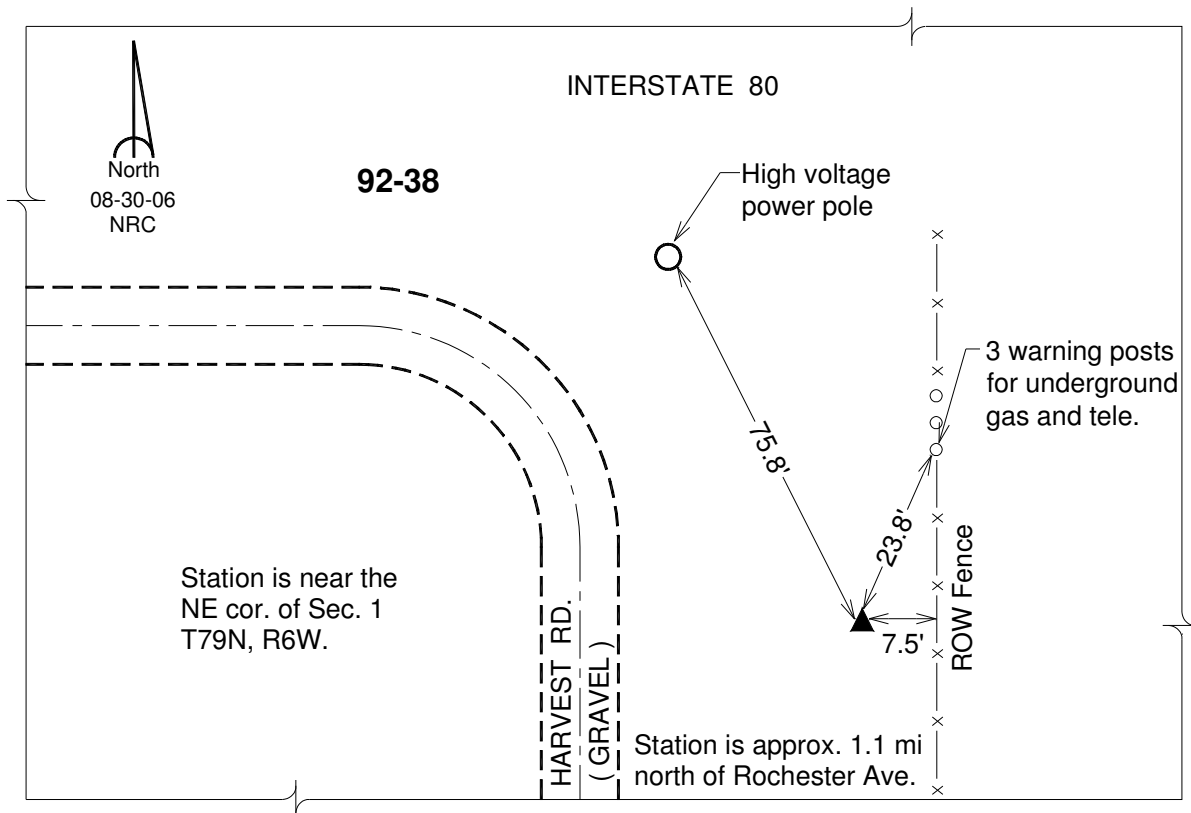
Northing: **620152.77sft**    Easting: **2191375.47sft**

Orthometric Height: **746.98sft**    Ellipsoid Height: **639.96sft**    **Geoid12A**

Latitude: **N41°41'04.51598"**    Longitude: **W91°28'58.03699"**

Mapping Angle: **1°19'43"**    Combination Scale Factor: **0.999953423**

**Monument Type:** 5/8" dia. driven aluminum rod with a 2-1/2" dia. aluminum cap and permanent magnet encased in a 6" dia. PVC pipe with an aluminum access cover.



*This document was prepared by DCI on 03-05-2013 for use by Johnson County, Iowa.*