

Johnson County, Iowa
Iowa South Zone (1402)
Horiz. Datum: **NAD83(NA2011)**
Vert. Datum: NAVD 1988
US Survey Feet
2013

Point Name: **47**

Designation: 92-47 Johnson County GPS Control Point (Set by ASI in 1992)

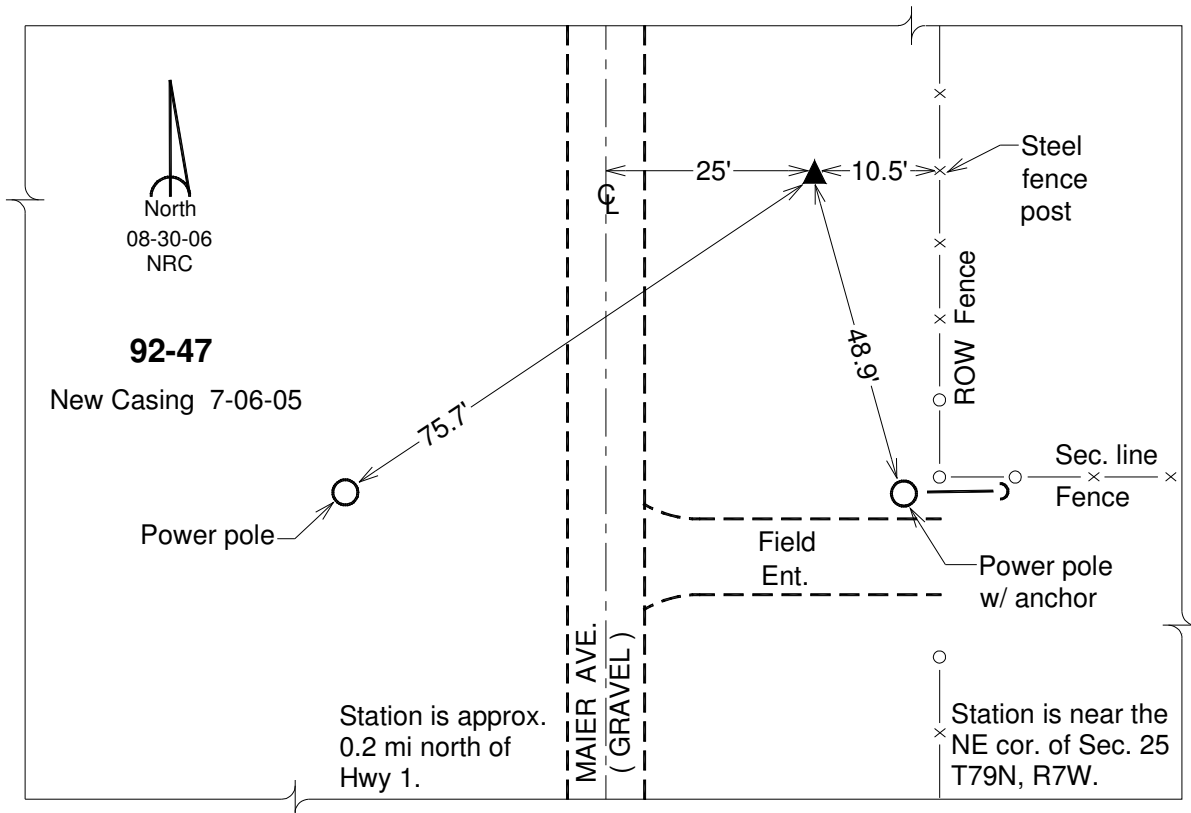
Northing: **598923.22sft** Easting: **2159942.62sft**

Orthometric Height: **776.68sft** Ellipsoid Height: **669.68sft** **Geoid12A**

Latitude: **N41°37'41.82050"** Longitude: **W91°35'58.31731"**

Mapping Angle: **1°15'07"** Combination Scale Factor: **0.999944194**

Monument Type: 5/8" dia. driven aluminum rod with a 2-1/2" dia. aluminum cap and permanent magnet encased in a 6" dia. PVC pipe with an aluminum access cover.



This document was prepared by DCI on 03-05-2013 for use by Johnson County, Iowa.