

**Johnson County, Iowa**  
Iowa South Zone (1402)  
Horiz. Datum: **NAD83(NA2011)**  
Vert. Datum: NAVD 1988  
US Survey Feet  
**2013**

Point Name: **53**

**Designation:** 92-53 Johnson County GPS Control Point (Set by ASI in 1992)

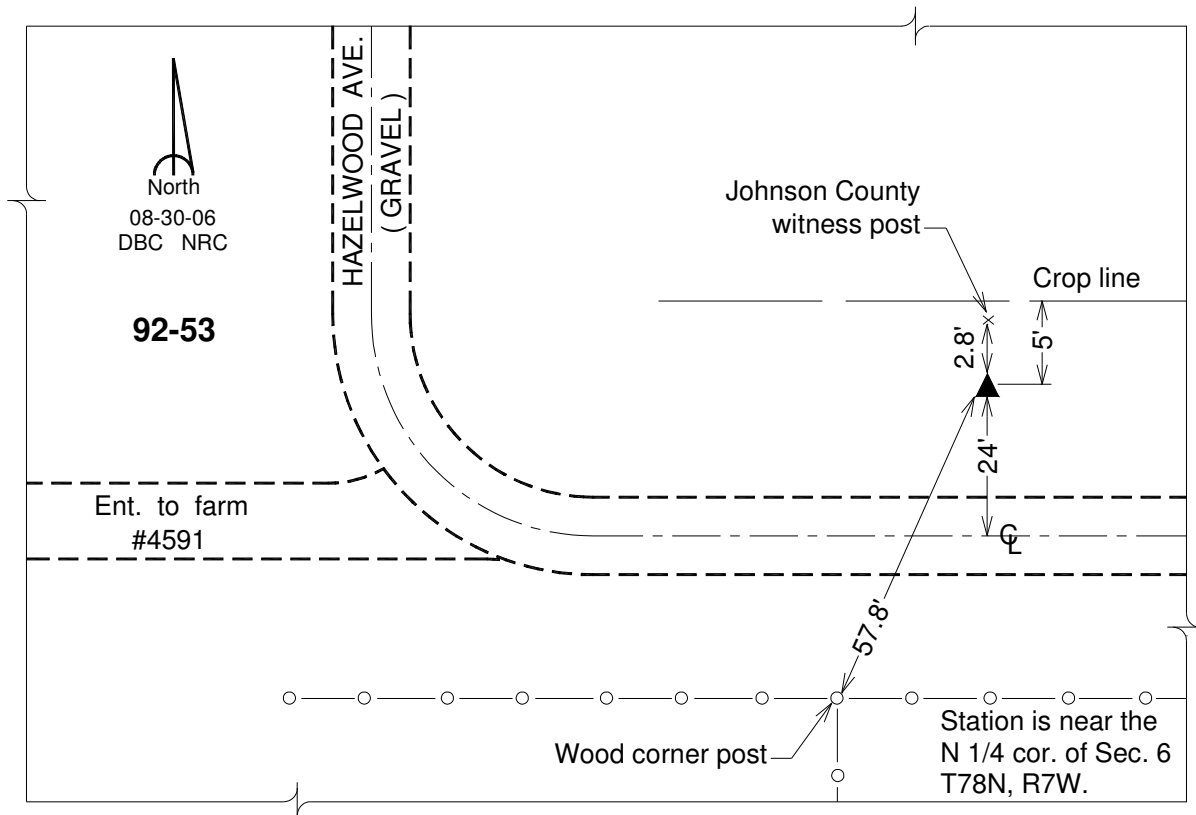
Northing: **588049.80sft** Easting: **2131329.73sft**

Orthometric Height: **690.98sft** Ellipsoid Height: **584.05sft** **Geoid12A**

Latitude: **N41°36'00.42189"** Longitude: **W91°42'17.96739"**

Mapping Angle: **1°10'57"** Combination Scale Factor: **0.999944735**

**Monument Type:** 5/8" dia. driven aluminum rod with a 2-1/2" dia. aluminum cap and permanent magnet encased in a 6" dia. PVC pipe with an aluminum access cover.



*This document was prepared by DCI on 03-05-2013 for use by Johnson County, Iowa.*