

**Johnson County, Iowa**  
Iowa South Zone (1402)  
Horiz. Datum: **NAD83(NA2011)**  
Vert. Datum: NAVD 1988  
US Survey Feet  
**2013**

Point Name: **58**

**Designation:** 92-58 Johnson County GPS Control Point (Set by ASI in 1992)

Northing: **578138.22sft** Easting: **2192479.26sft**

Orthometric Height: **660.62sft** Ellipsoid Height: **553.36sft** **Geoid12A**

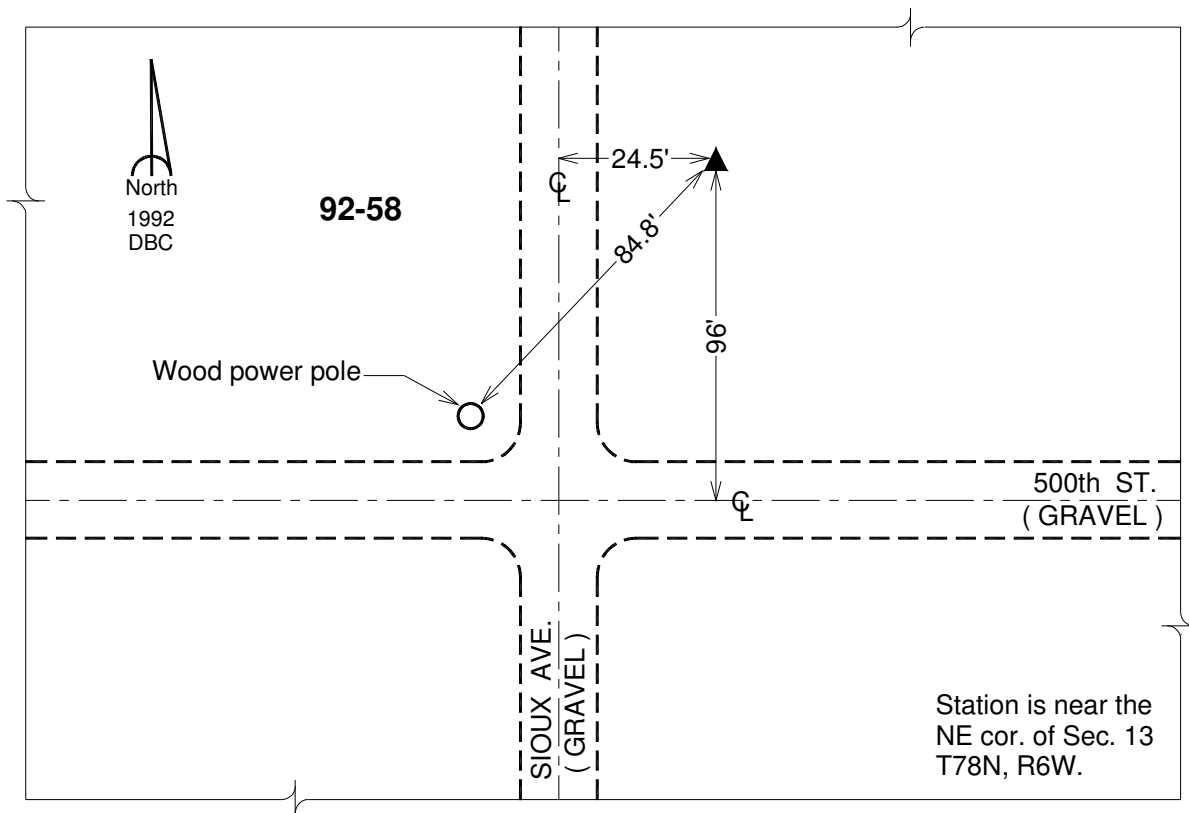
Latitude: **N41°34'09.28008"**

Longitude: **W91°28'56.33685"**

Mapping Angle: **1°19'45"**

Combination Scale Factor: **0.999942594**

**Monument Type:** 5/8" dia. driven aluminum rod with a 2-1/2" dia. aluminum cap and permanent magnet encased in a 6" dia. PVC pipe with an aluminum access cover.



*This document was prepared by DCI on 03-05-2013 for use by Johnson County, Iowa.*