

Johnson County, Iowa
Iowa South Zone (1402)
Horiz. Datum: **NAD83(NA2011)**
Vert. Datum: NAVD 1988
US Survey Feet
2013

Point Name: **69**

Designation: 92-69 Johnson County GPS Control Point (Set by ASI in 1992)

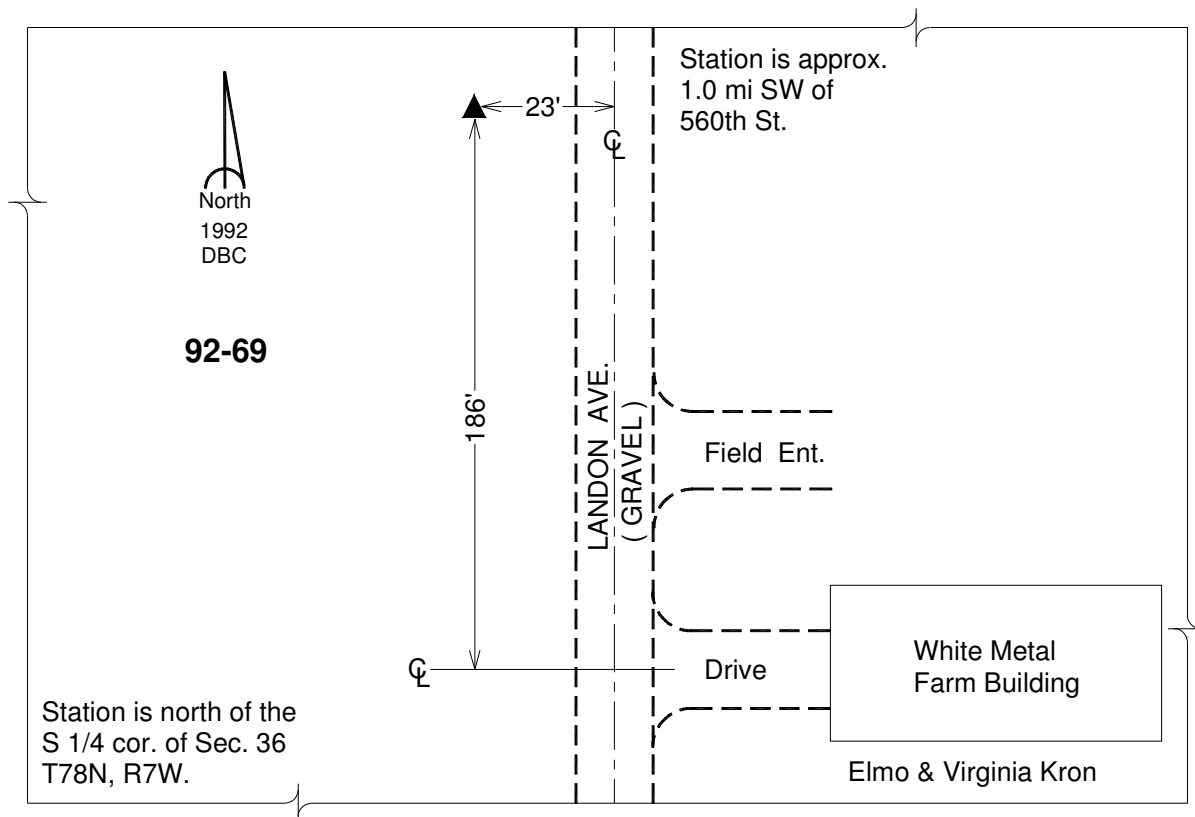
Northing: **556189.71sft** Easting: **2158347.68sft**

Orthometric Height: **751.08sft** Ellipsoid Height: **643.88sft** **Geoid12A**

Latitude: **N41°30'40.05934"** Longitude: **W91°36'31.54852"**

Mapping Angle: **1°14'45"** Combination Scale Factor: **0.999932275**

Monument Type: 5/8" dia. driven aluminum rod with a 2-1/2" dia. aluminum cap and permanent magnet encased in a 6" dia. PVC pipe with an aluminum access cover.



This document was prepared by DCI on 03-05-2013 for use by Johnson County, Iowa.