

**Johnson County, Iowa**  
Iowa South Zone (1402)  
Horiz. Datum: **NAD83(NA2011)**  
Vert. Datum: NAVD 1988  
US Survey Feet  
**2013**

Point Name: **75**

**Designation:** 92-75 Johnson County GPS Control Point (Set by ASI in 1992)

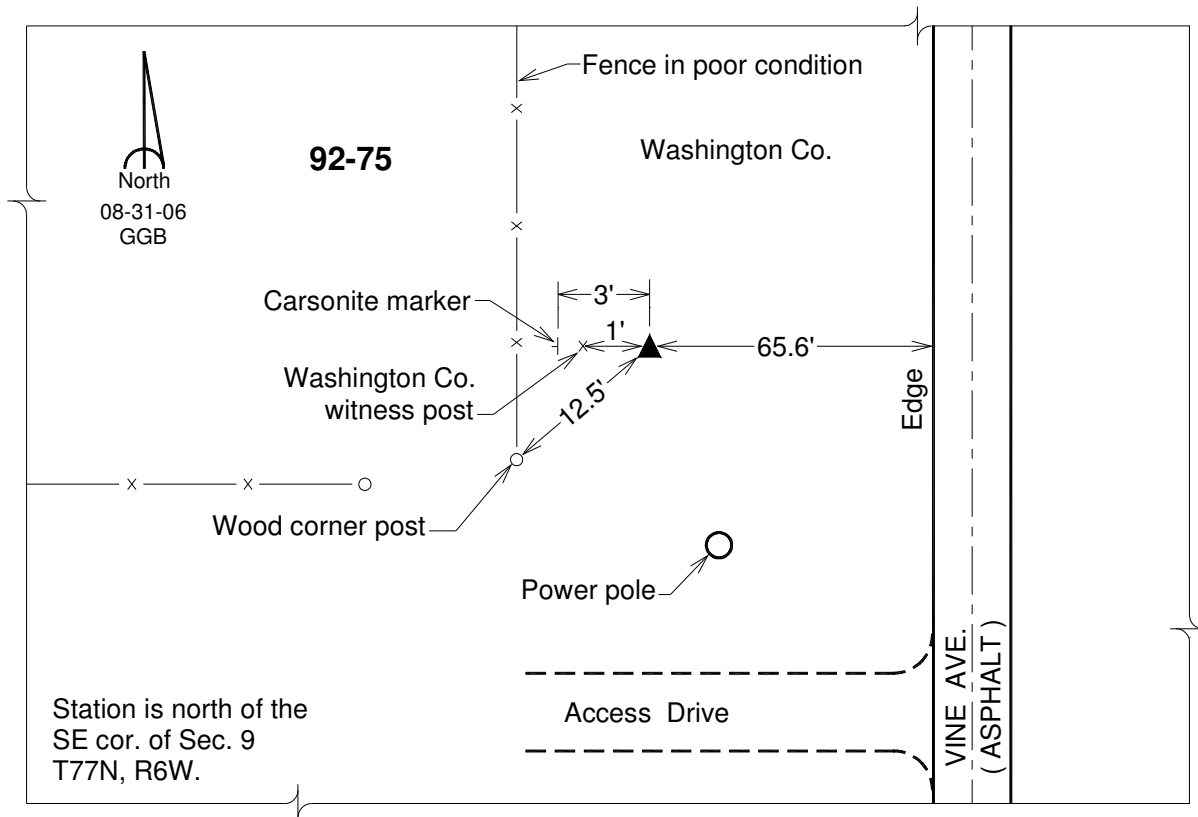
Northing: **546436.16sft**    Easting: **2176943.36sft**

Orthometric Height: **624.35sft**    Ellipsoid Height: **516.96sft**    **Geoid12A**

Latitude: **N41°28'59.65111"**    Longitude: **W91°32'30.06672"**

Mapping Angle: **1°17'24"**    Combination Scale Factor: **0.999935817**

**Monument Type:** 5/8" dia. driven aluminum rod with a 2-1/2" dia. aluminum cap and permanent magnet encased in a 6" dia. PVC pipe with an aluminum access cover.



*This document was prepared by DCI on 03-05-2013 for use by Johnson County, Iowa.*