

Johnson County, Iowa
Iowa South Zone (1402)
Horiz. Datum: **NAD83(NA2011)**
Vert. Datum: NAVD 1988
US Survey Feet
2013

Point Name: **78**

Designation: 92-78 Johnson County GPS Control Point (Set by ASI in 1992)

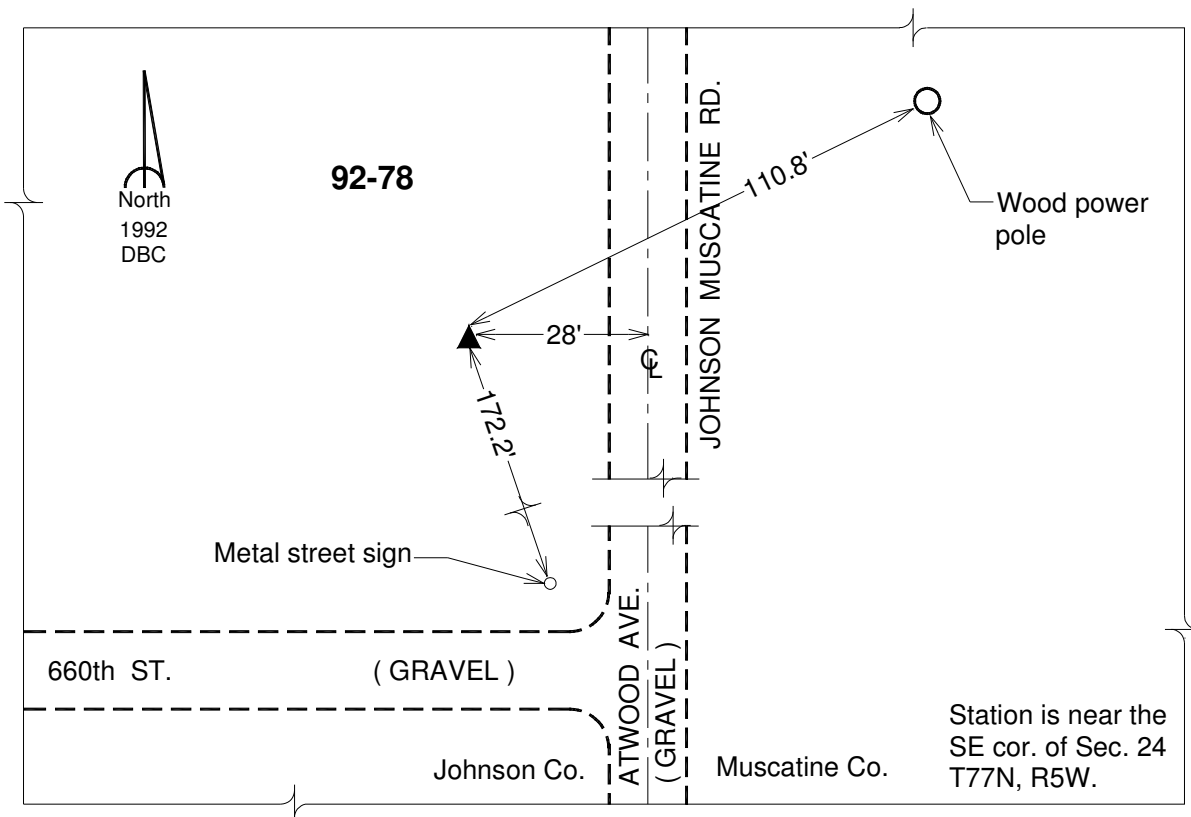
Northing: **536456.60**sft Easting: **2224736.01**sft

Orthometric Height: **709.54**sft Ellipsoid Height: **601.90**sft **Geoid12A**

Latitude: **N41°27'09.97713"** Longitude: **W91°22'05.52819"**

Mapping Angle: **1°24'15"** Combination Scale Factor: **0.999929290**

Monument Type: 5/8" dia. driven aluminum rod with a 2-1/2" dia. aluminum cap and permanent magnet encased in a 6" dia. PVC pipe with an aluminum access cover.



This document was prepared by DCI on 03-05-2013 for use by Johnson County, Iowa.