

**Johnson County, Iowa**  
Iowa South Zone (1402)  
Horiz. Datum: **NAD83(NA2011)**  
Vert. Datum: NAVD 1988  
US Survey Feet  
**2013**

Point Name: **82**

**Designation:** 92-82 Johnson County GPS Control Point (Set by ASI in 1992)

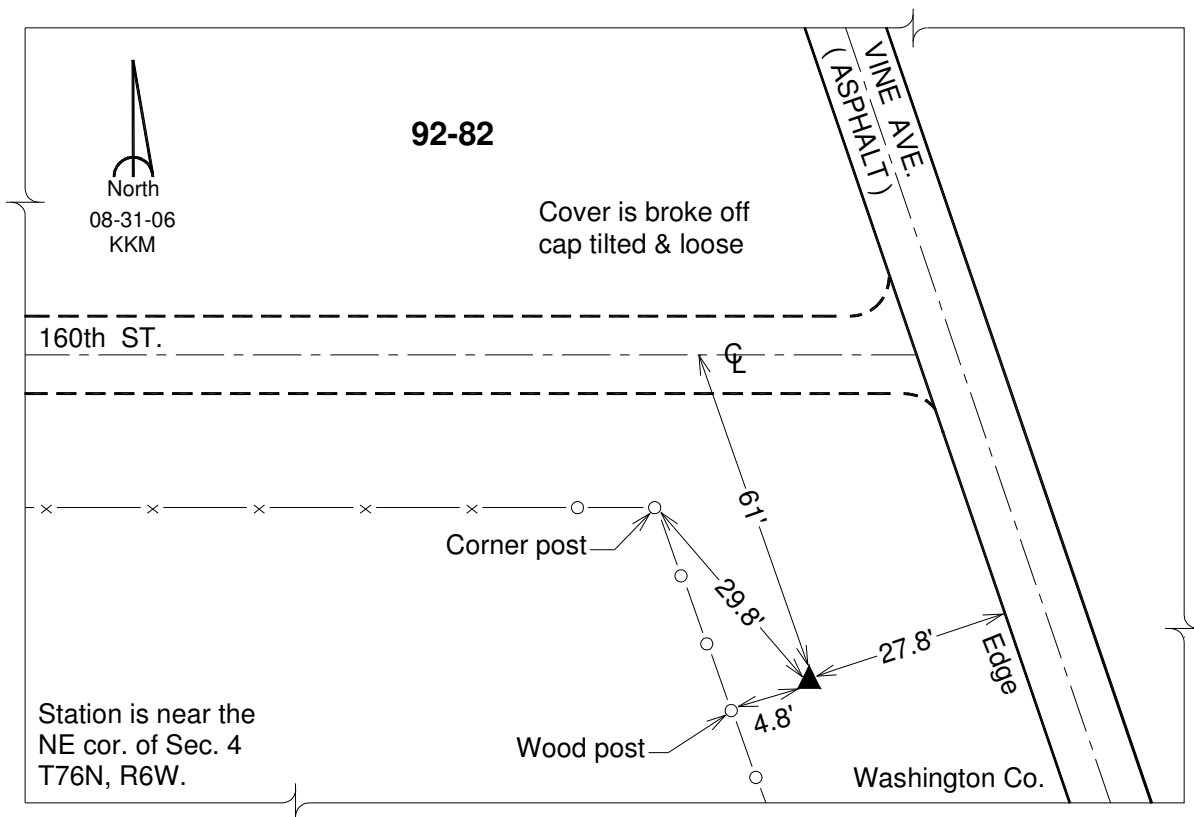
Northing: **524867.81sft** Easting: **2177749.33sft**

Orthometric Height: **752.40sft** Ellipsoid Height: **644.90sft** **Geoid12A**

Latitude: **N41°25'26.42499"** Longitude: **W91°32'25.86313"**

Mapping Angle: **1°17'27"** Combination Scale Factor: **0.999925161**

**Monument Type:** 5/8" dia. driven aluminum rod with a 2-1/2" dia. aluminum cap and permanent magnet encased in a 6" dia. PVC pipe with an aluminum access cover.



*This document was prepared by DCI on 03-05-2013 for use by Johnson County, Iowa.*