

Johnson County, Iowa
Iowa South Zone (1402)
Horiz. Datum: **NAD83(NA2011)**
Vert. Datum: NAVD 1988
US Survey Feet
2013

Point Name: **85**

Designation: USGS third order bench mark "665 15 LMT 1963"

Northing: **567693.17sft** Easting: **2192577.47sft**

Orthometric Height: **664.76sft** Ellipsoid Height: **557.43sft** **Geoid12A**

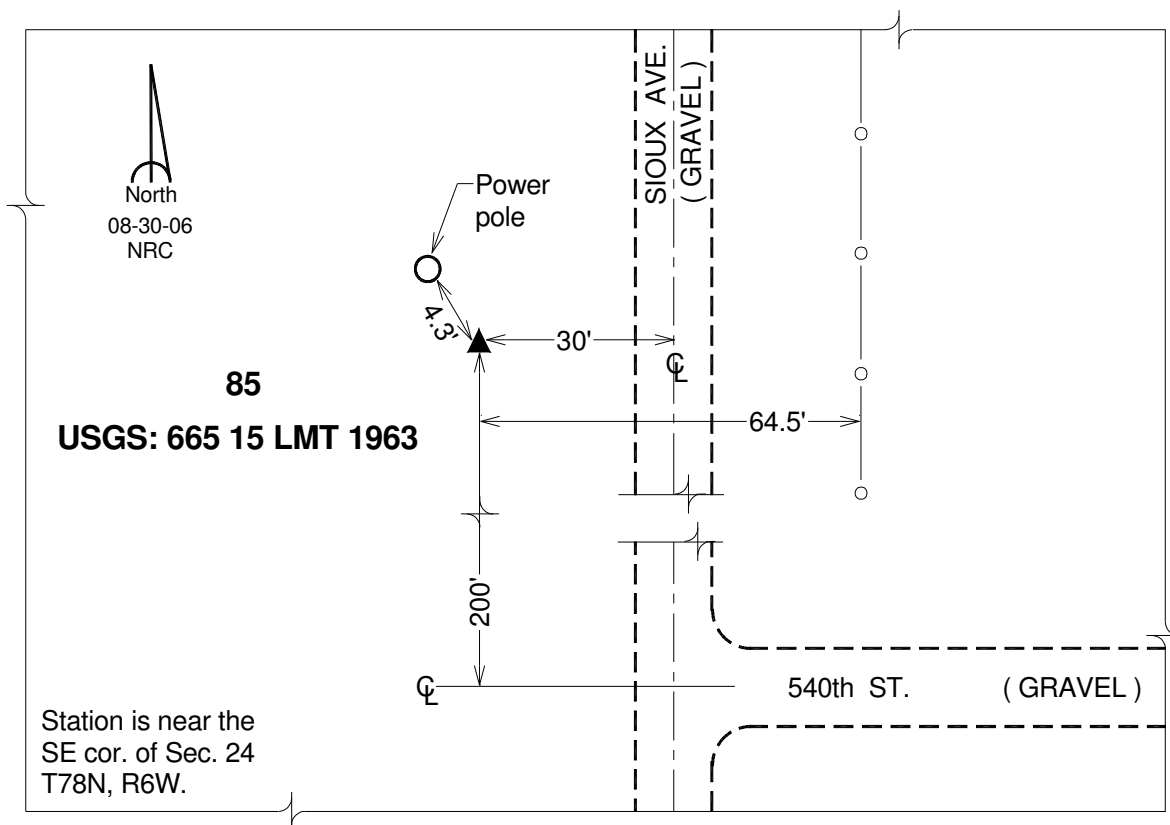
Latitude: **N41°32'26.08829"**

Longitude: **W91°28'58.23165"**

Mapping Angle: **1°19'43"**

Combination Scale Factor: **0.999939311**

Monument Type: A standard bench mark disk set in the top of a concrete monument.



This document was prepared by DCI on 03-05-2013 for use by Johnson County, Iowa.