

Johnson County, Iowa
Iowa South Zone (1402)
Horiz. Datum: **NAD83(NA2011)**
Vert. Datum: NAVD 1988
US Survey Feet
2013

Point Name: **86**

Designation: USGS third order bench mark "667 1 LMT 1963"

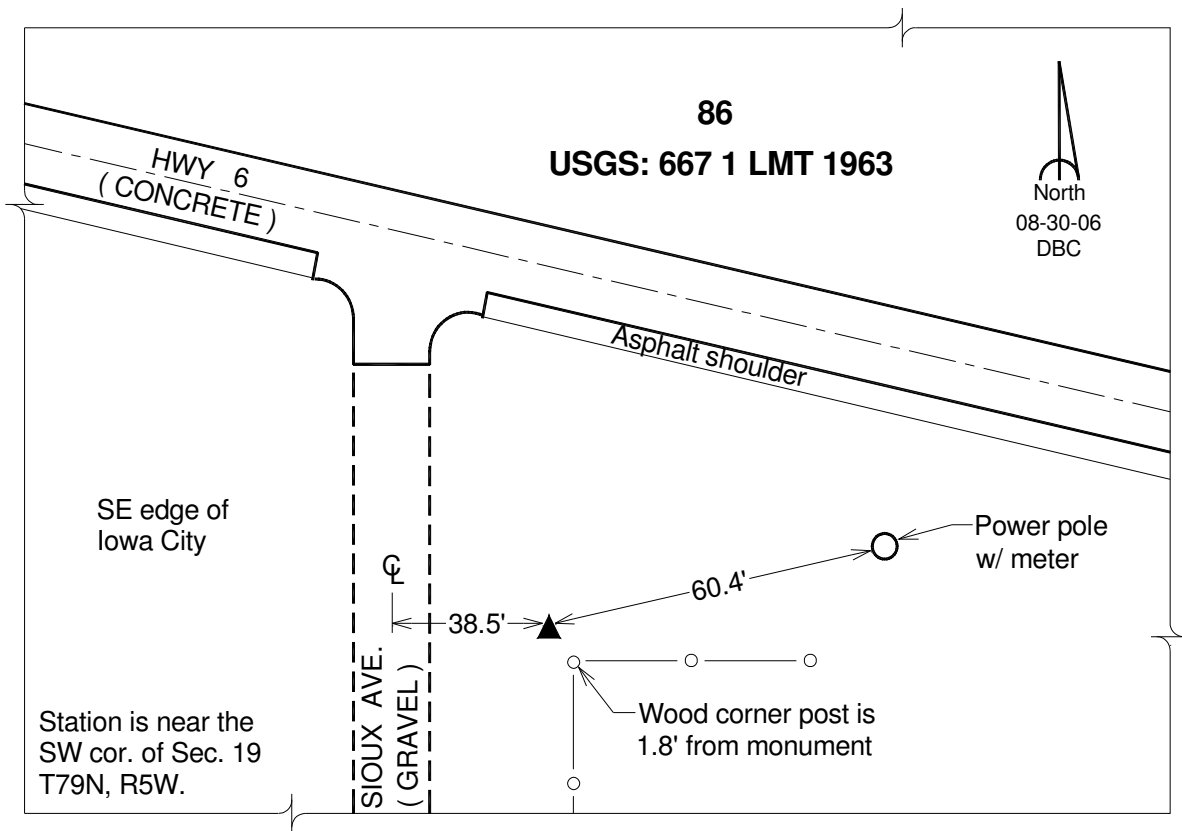
Northing: **599519.34sft** Easting: **2191865.06sft**

Orthometric Height: **666.44sft** Ellipsoid Height: **559.31sft** **Geoid12A**

Latitude: **N41°37'40.60660"** Longitude: **W91°28'57.89229"**

Mapping Angle: **1°19'44"** Combination Scale Factor: **0.999949416**

Monument Type: A standard bench mark disk set in the top of a concrete monument.



This document was prepared by DCI on 03-05-2013 for use by Johnson County, Iowa.