

Johnson County, Iowa
Iowa South Zone (1402)
Horiz. Datum: **NAD83(NA2011)**
Vert. Datum: NAVD 1988
US Survey Feet
2013

Point Name: **92**

Designation: NGS first order horiz. station "CELLMAN 2 1969" PID: MG0897

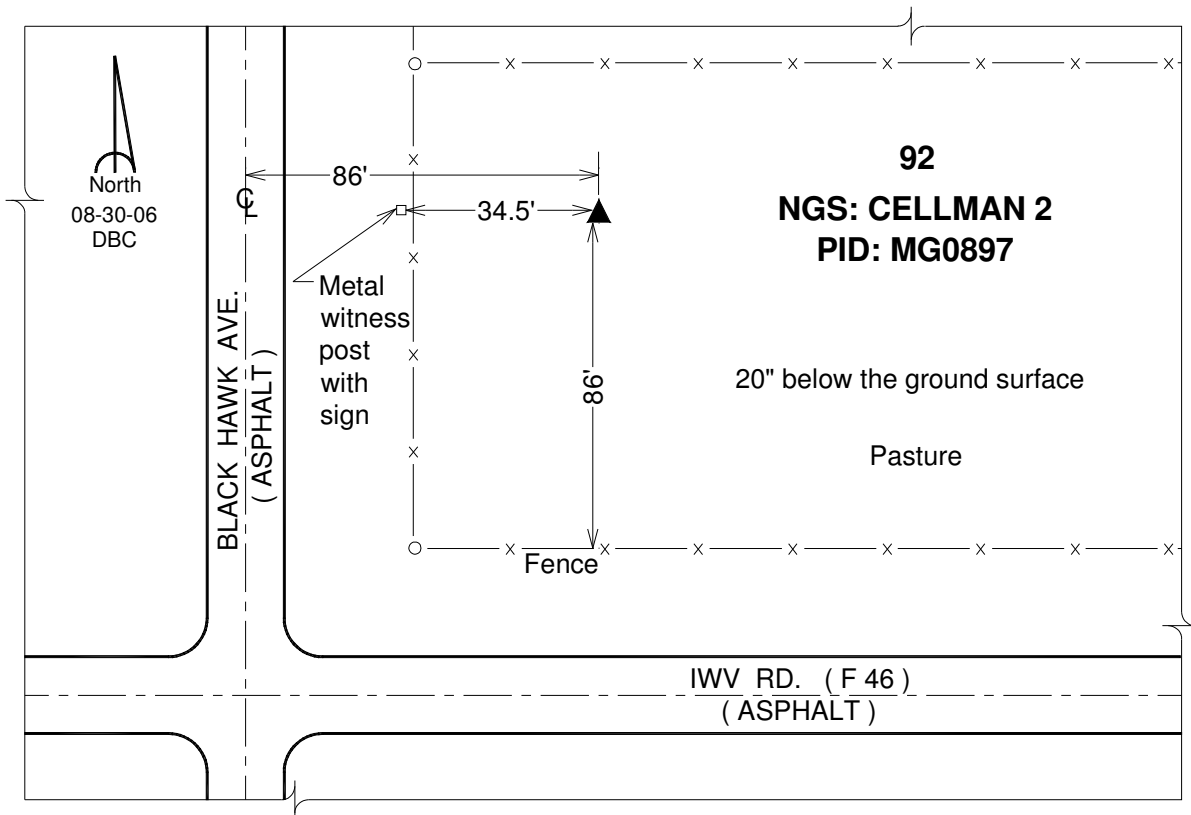
Northing: **609053.97sft** Easting: **2103914.22sft**

Orthometric Height: **833.65sft** Ellipsoid Height: **727.12sft** **Geoid12A**

Latitude: **N41°39'33.33209"** Longitude: **W91°48'13.36047"**

Mapping Angle: **1°07'02"** Combination Scale Factor: **0.999945631**

Monument Type: A standard triangulation disk set in the top of a square concrete monument.



This document was prepared by DCI on 03-05-2013 for use by Johnson County, Iowa.