

Johnson County, Iowa
Iowa South Zone (1402)
Horiz. Datum: **NAD83(NA2011)**
Vert. Datum: NAVD 1988
US Survey Feet
2013

Point Name: **95**

Designation: NGS 2nd order vertical station "F 85" PID: MG0618

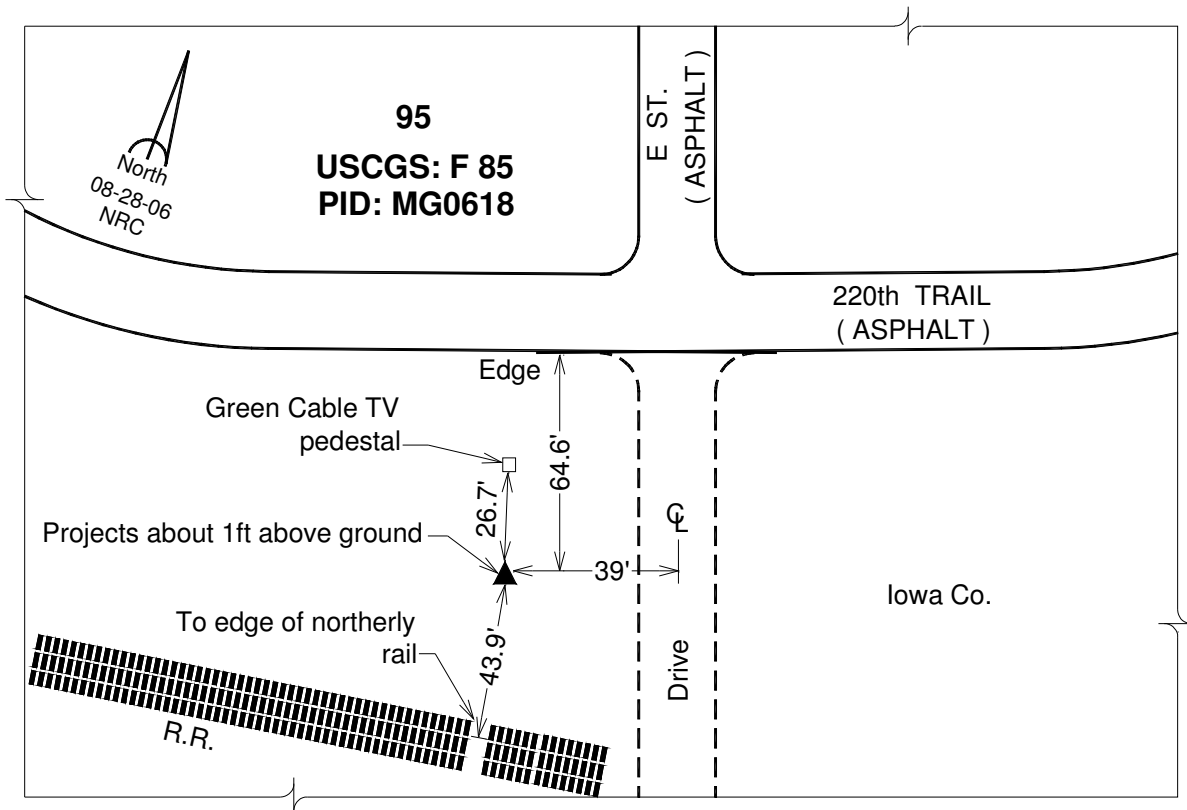
Northing: **662809.58sft** Easting: **2090746.75sft**

Orthometric Height: **735.89sft** Ellipsoid Height: **630.10sft** **Geoid12A**

Latitude: **N41°48'26.81285"** Longitude: **W91°50'53.35327"**

Mapping Angle: **1°05'17"** Combination Scale Factor: **0.999974305**

Monument Type: A standard bench mark disk set in the top of a concrete monument.



This document was prepared by DCI on 03-05-2013 for use by Johnson County, Iowa.