

Johnson County, Iowa
Iowa South Zone (1402)
Horiz. Datum: **NAD83(NA2011)**
Vert. Datum: NAVD 1988
US Survey Feet
2013

Point Name: **202**

Designation: 2006-202 Johnson Co GPS Control Pt. (Set by DCI in 2006)

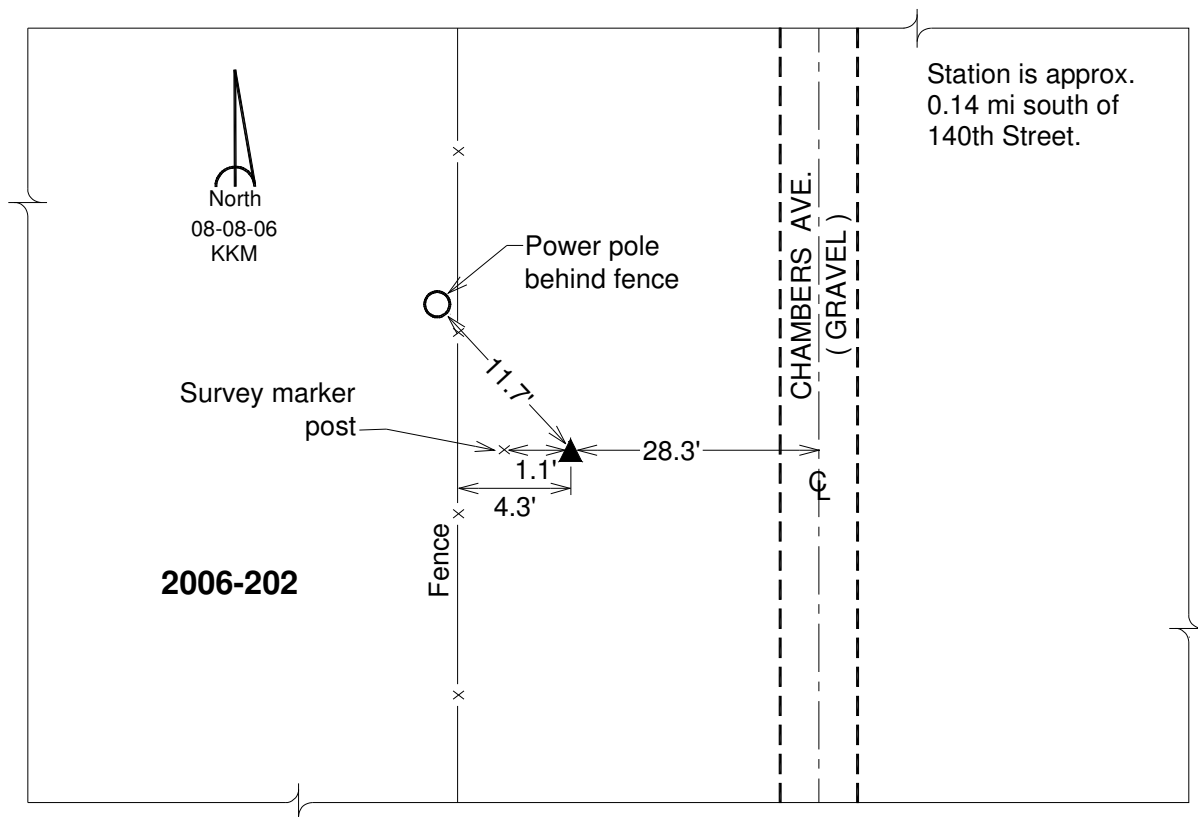
Northing: **671729.91**sft Easting: **2108288.41**sft

Orthometric Height: **749.63**sft Ellipsoid Height: **643.69**sft **Geoid12A**

Latitude: **N41°49'51.56605"** Longitude: **W91°46'59.44859"**

Mapping Angle: **1°07'51"** Combination Scale Factor: **0.999978096**

Monument Type: Berntsen Top Security Rod Monument with a 2-1/2" dia. domed survey cap and permanent magnet encased in a 6" dia. PVC pipe with a NGS style aluminum access cover.



This document was prepared by DCI on 03-05-2013 for use by Johnson County, Iowa.