

**Johnson County, Iowa**  
 Iowa South Zone (1402)  
 Horiz. Datum: **NAD83(NA2011)**  
 Vert. Datum: NAVD 1988  
 US Survey Feet  
**2013**

Point Name: **203**

**Designation:** 2006-203 Johnson Co GPS Control Pt. (Set by DCI in 2006)

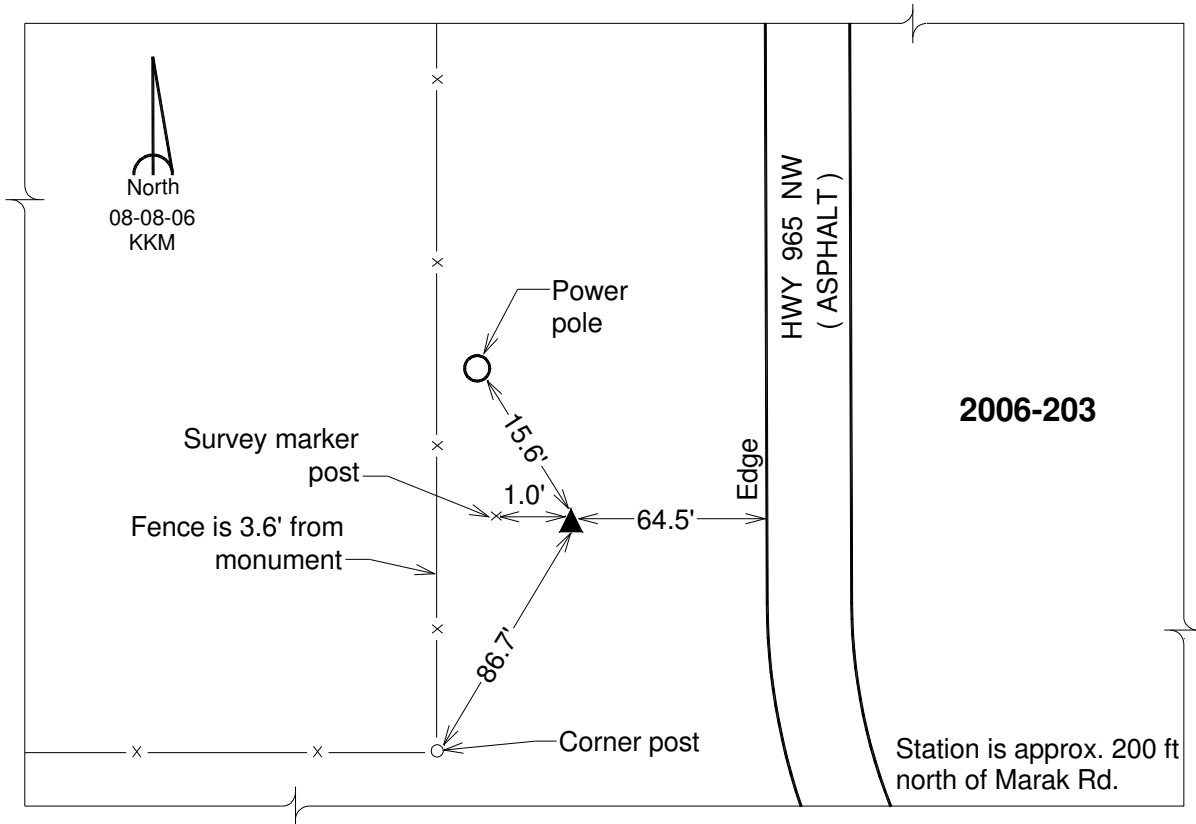
Northing: **672872.38sft**    Easting: **2137545.11sft**

Orthometric Height: **826.87sft**    Ellipsoid Height: **720.48sft**    **Geoid12A**

Latitude: **N41°49'56.96758"**    Longitude: **W91°40'32.76315"**

Mapping Angle: **1°12'06"**    Combination Scale Factor: **0.999974721**

**Monument Type:** Berntsen Top Security Rod Monument with a 2-1/2" dia. domed survey cap and permanent magnet encased in a 6" dia. PVC pipe with a NGS style aluminum access cover.



*This document was prepared by DCI on 03-05-2013 for use by Johnson County, Iowa.*