

Johnson County, Iowa
Iowa South Zone (1402)
Horiz. Datum: **NAD83(NA2011)**
Vert. Datum: NAVD 1988
US Survey Feet
2013

Point Name: **205**

Designation: 2006-205 Johnson Co GPS Control Pt. (Set by DCI in 2006)

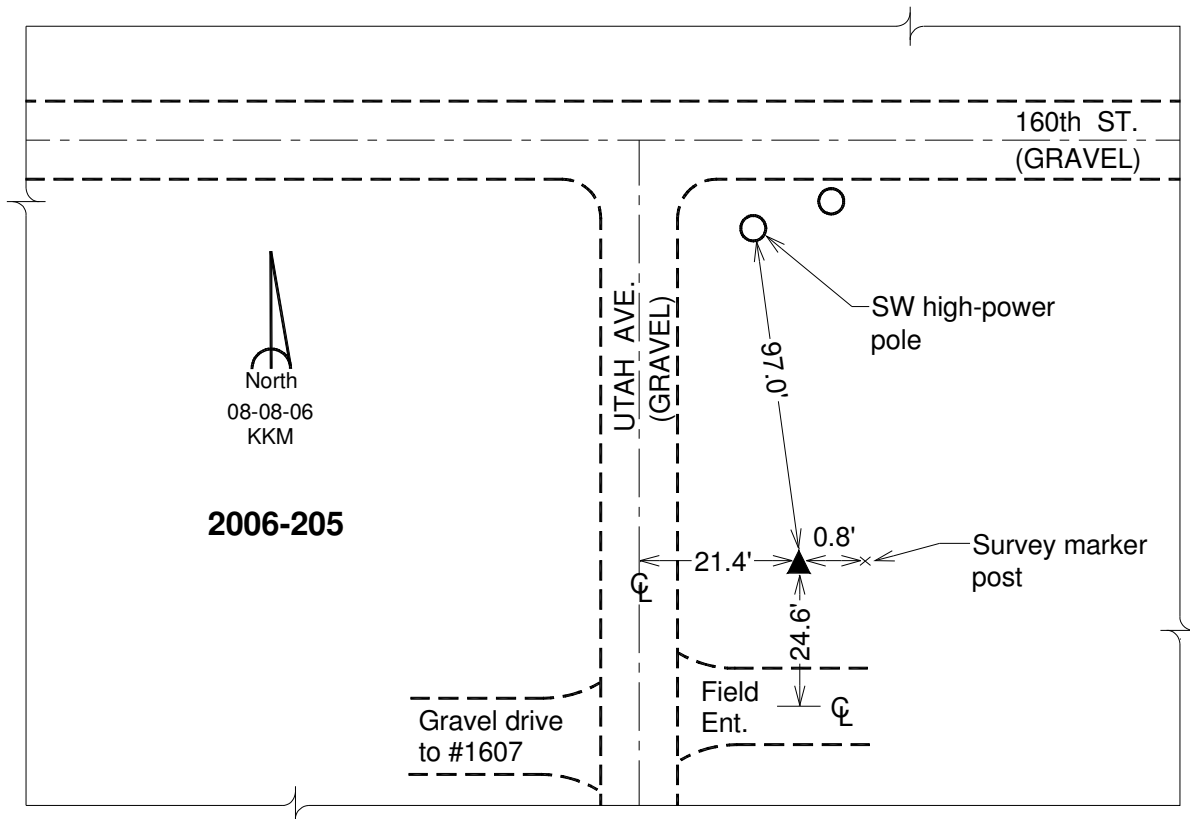
Northing: **668380.18sft** Easting: **2204824.19sft**

Orthometric Height: **828.94sft** Ellipsoid Height: **722.02sft** **Geoid12A**

Latitude: **N41°48'57.71996"** Longitude: **W91°25'45.71176"**

Mapping Angle: **1°21'50"** Combination Scale Factor: **0.999971518**

Monument Type: Berntsen Top Security Rod Monument with a 2-1/2" dia. domed survey cap and permanent magnet encased in a 6" dia. PVC pipe with a NGS style aluminum access cover.



This document was prepared by DCI on 03-05-2013 for use by Johnson County, Iowa.