

**Johnson County, Iowa**  
 Iowa South Zone (1402)  
 Horiz. Datum: **NAD83(NA2011)**  
 Vert. Datum: NAVD 1988  
 US Survey Feet  
**2013**

Point Name: **206**

**Designation:** 2006-206 Johnson Co GPS Control Pt. (Set by DCI in 2006)

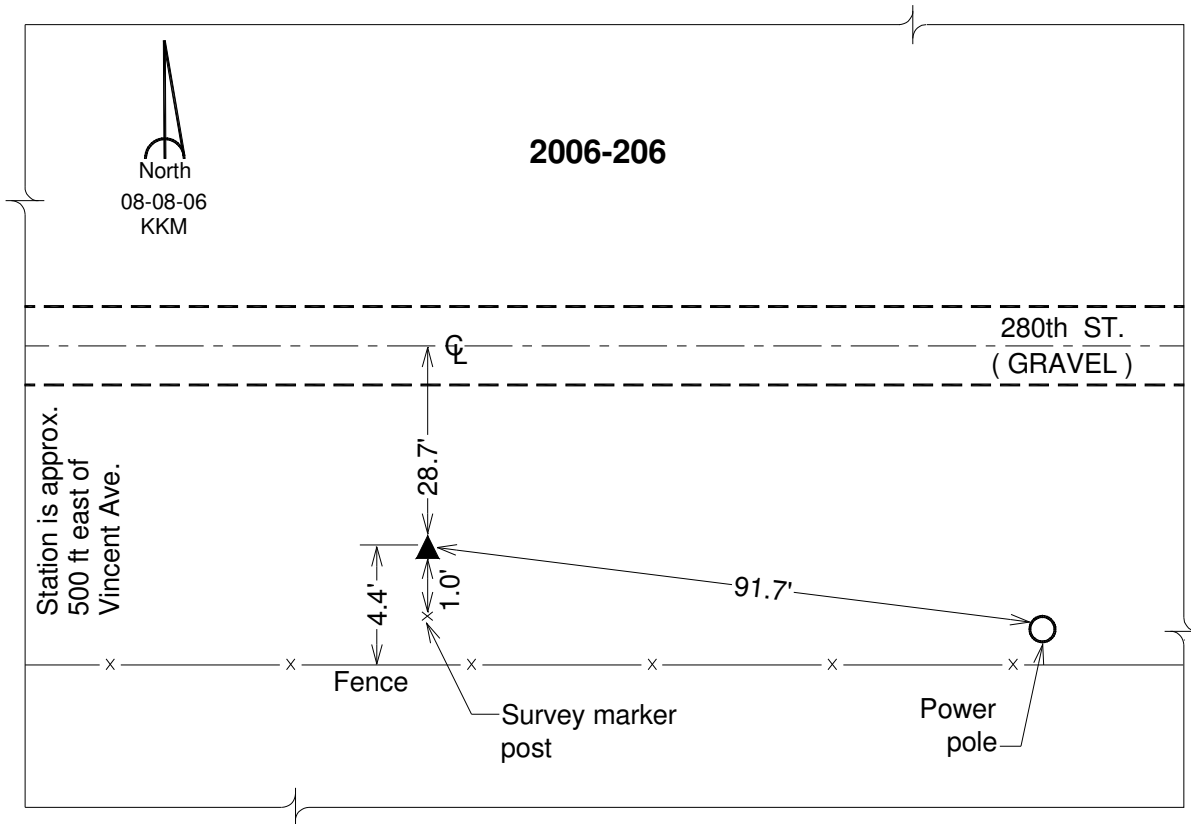
Northing: **636858.70**sft    Easting: **2209968.77**sft

Orthometric Height: **793.35**sft    Ellipsoid Height: **686.34**sft    **Geoid12A**

Latitude: **N41°43'45.18389"**    Longitude: **W91°24'47.77729"**

Mapping Angle: **1°22'28"**    Combination Scale Factor: **0.999958091**

**Monument Type:** Berntsen Top Security Rod Monument with a 2-1/2" dia. domed survey cap and permanent magnet encased in a 6" dia. PVC pipe with a NGS style aluminum access cover.



*This document was prepared by DCI on 03-05-2013 for use by Johnson County, Iowa.*