

Johnson County, Iowa
 Iowa South Zone (1402)
 Horiz. Datum: **NAD83(NA2011)**
 Vert. Datum: NAVD 1988
 US Survey Feet
2013

Point Name: **207**

Designation: 2006-207 Johnson Co GPS Control Pt. (Set by DCI in 2006)

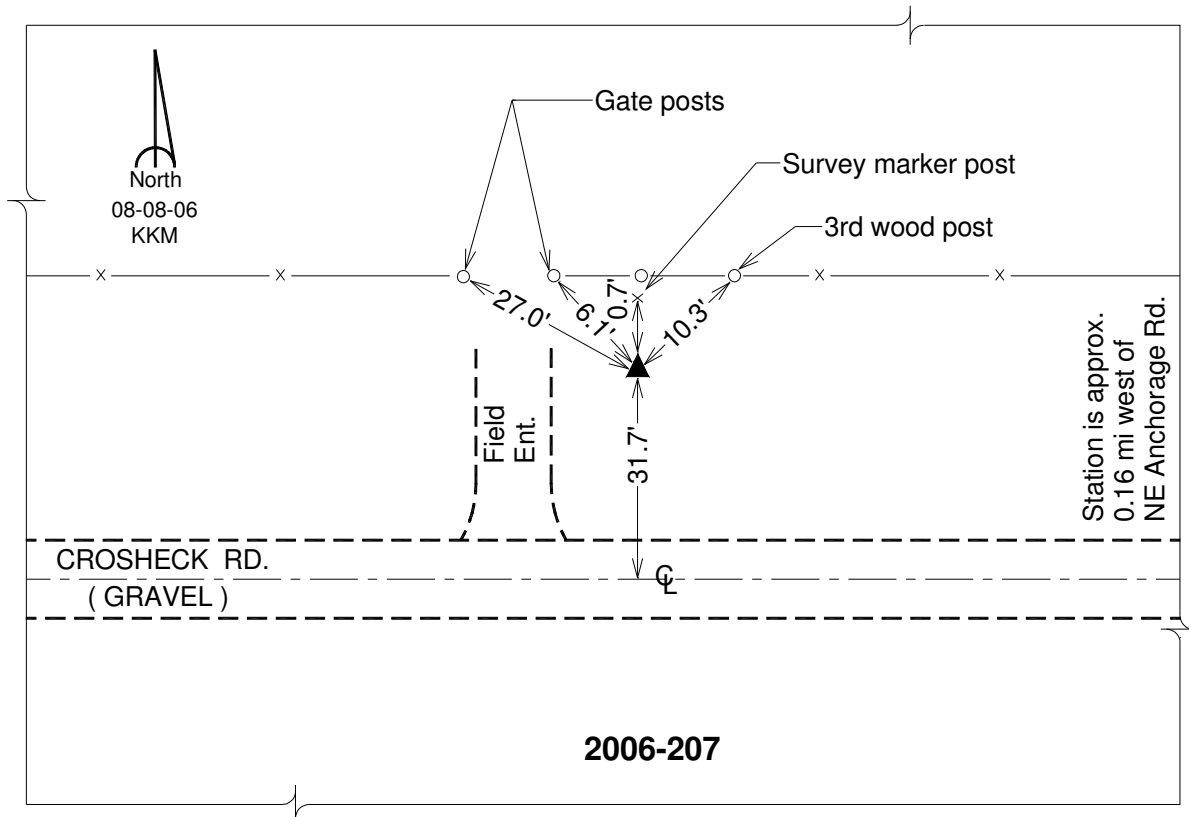
Northing: **639765.54**sft Easting: **2178138.60**sft

Orthometric Height: **820.85**sft Ellipsoid Height: **713.95**sft **Geoid12A**

Latitude: **N41°44'21.22705"** Longitude: **W91°31'46.59155"**

Mapping Angle: **1°17'52"** Combination Scale Factor: **0.999958400**

Monument Type: Berntsen Top Security Rod Monument with a 2-1/2" dia. domed survey cap and permanent magnet encased in a 6" dia. PVC pipe with a NGS style aluminum access cover.



This document was prepared by DCI on 03-05-2013 for use by Johnson County, Iowa.