

Johnson County, Iowa
 Iowa South Zone (1402)
 Horiz. Datum: **NAD83(NA2011)**
 Vert. Datum: NAVD 1988
 US Survey Feet
2013

Point Name: **208**

Designation: 2006-208 Johnson Co GPS Control Pt. (Set by DCI in 2006)

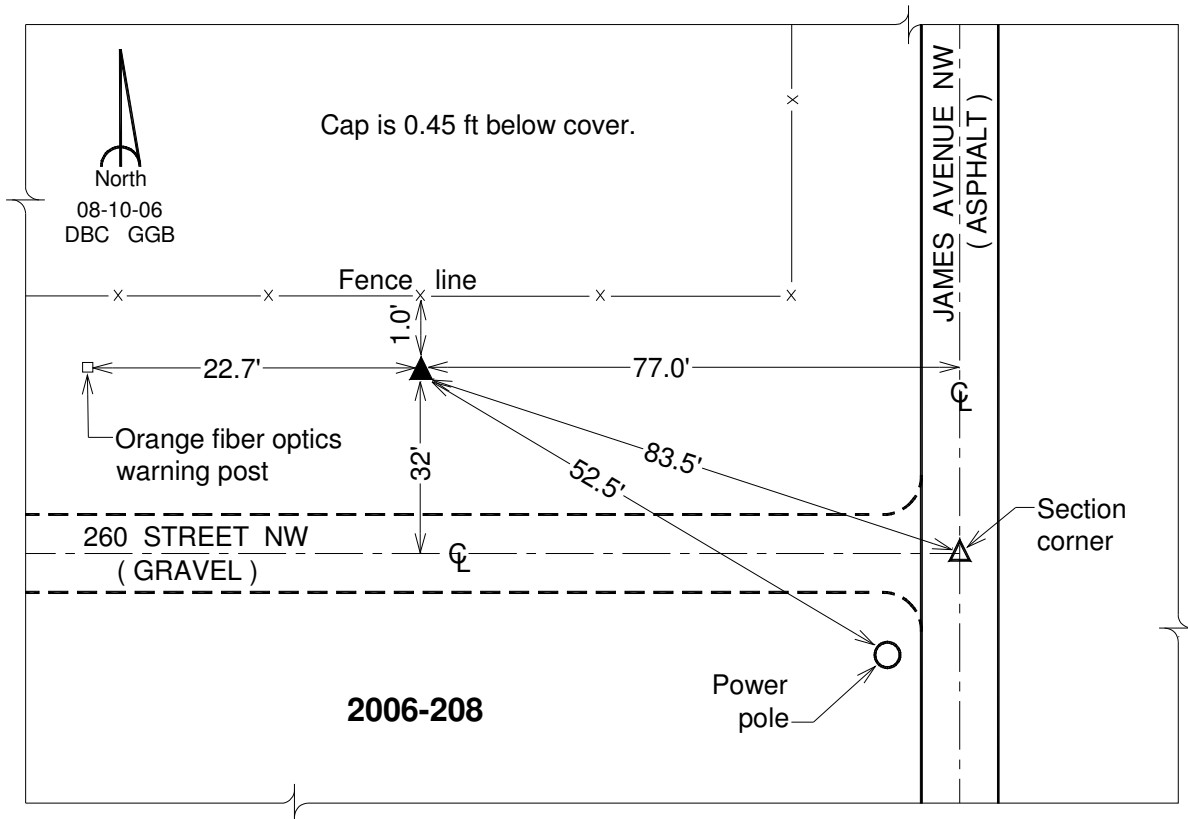
Northing: **641260.38sft** Easting: **2143395.68sft**

Orthometric Height: **769.53sft** Ellipsoid Height: **662.82sft** **Geoid12A**

Latitude: **N41°44'43.51545"** Longitude: **W91°39'24.34624"**

Mapping Angle: **1°12'51"** Combination Scale Factor: **0.999961861**

Monument Type: Berntsen Top Security Rod Monument with a 2-1/2" dia. domed survey cap and permanent magnet encased in a 6" dia. PVC pipe with a NGS style aluminum access cover.



This document was prepared by DCI on 03-05-2013 for use by Johnson County, Iowa.