

Johnson County, Iowa
Iowa South Zone (1402)
Horiz. Datum: **NAD83(NA2011)**
Vert. Datum: NAVD 1988
US Survey Feet
2013

Point Name: **210**

Designation: 2006-210 Johnson Co GPS Control Pt. (Set by DCI in 2006)

Northing: **626893.05sft** Easting: **2110218.59sft**

Orthometric Height: **769.16sft** Ellipsoid Height: **662.70sft** **Geoid12A**

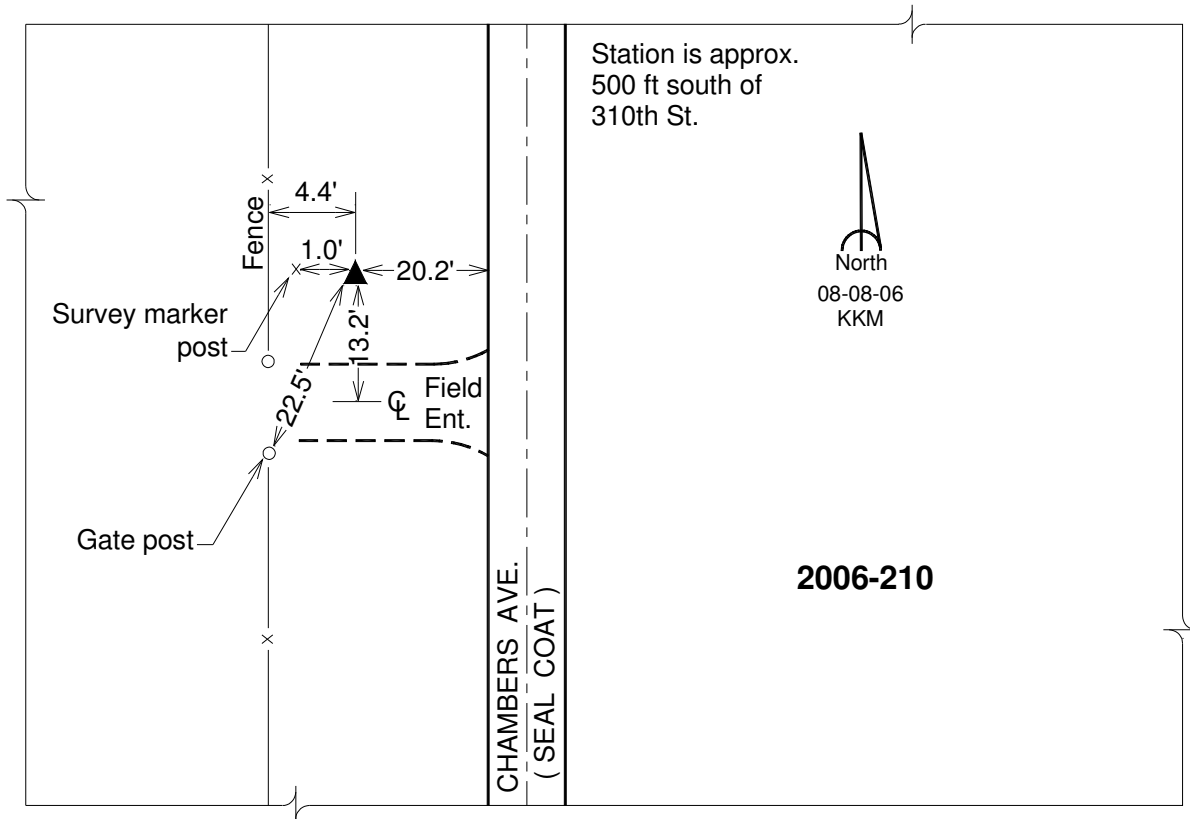
Latitude: **N41°42'28.31795"**

Longitude: **W91°46'45.67242"**

Mapping Angle: **1°08'00"**

Combination Scale Factor: **0.999955851**

Monument Type: Berntsen Top Security Rod Monument with a 2-1/2" dia. domed survey cap and permanent magnet encased in a 6" dia. PVC pipe with a NGS style aluminum access cover.



This document was prepared by DCI on 03-05-2013 for use by Johnson County, Iowa.