

Johnson County, Iowa
Iowa South Zone (1402)
Horiz. Datum: **NAD83(NA2011)**
Vert. Datum: NAVD 1988
US Survey Feet
2013

Point Name: **211**

Designation: 2006-211 Johnson Co GPS Control Pt. (Set by DCI in 2006)

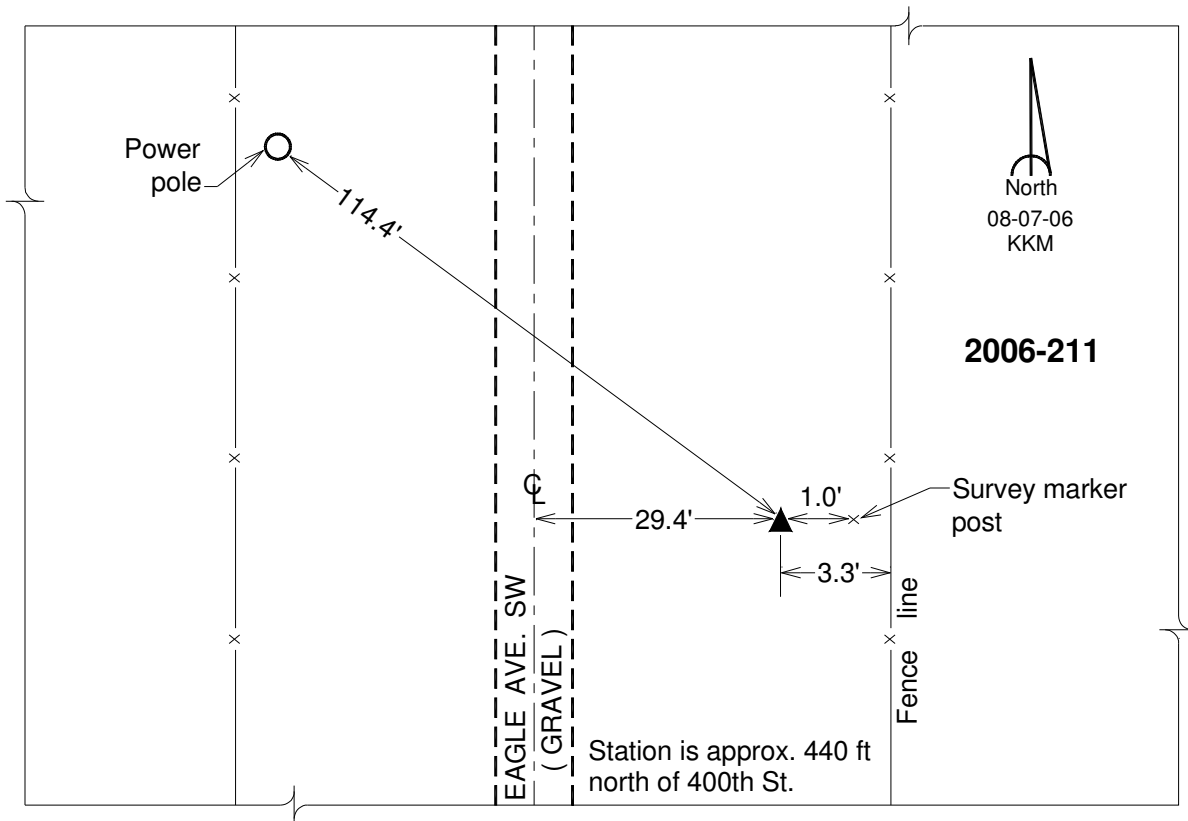
Northing: **604062.89sft** Easting: **2113249.25sft**

Orthometric Height: **821.27sft** Ellipsoid Height: **714.59sft** **Geoid12A**

Latitude: **N41°38'42.21485"** Longitude: **W91°46'11.71013"**

Mapping Angle: **1°08'23"** Combination Scale Factor: **0.999944277**

Monument Type: Berntsen Top Security Rod Monument with a 2-1/2" dia. domed survey cap and permanent magnet encased in a 6" dia. PVC pipe with a NGS style aluminum access cover.



This document was prepared by DCI on 03-05-2013 for use by Johnson County, Iowa.