

**Johnson County, Iowa**  
 Iowa South Zone (1402)  
 Horiz. Datum: **NAD83(NA2011)**  
 Vert. Datum: NAVD 1988  
 US Survey Feet  
**2013**

Point Name: **214**

**Designation:** 2006-214 Johnson Co GPS Control Pt. (Set by DCI in 2006)

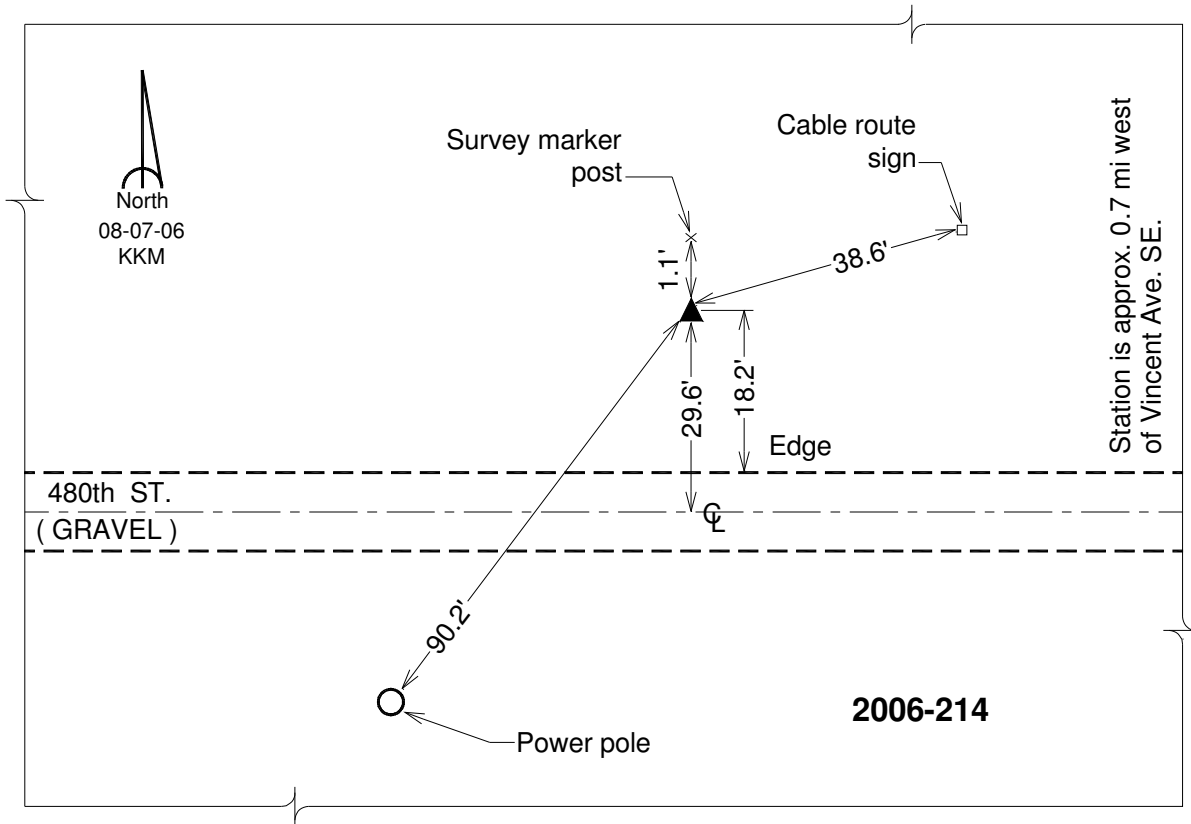
Northing: **583825.97sft**    Easting: **2206875.78sft**

Orthometric Height: **734.80sft**    Ellipsoid Height: **627.55sft**    **Geoid12A**

Latitude: **N41°35'02.11672"**                      Longitude: **W91°25'45.20666"**

Mapping Angle: **1°21'50"**                      Combination Scale Factor: **0.999940732**

**Monument Type:** Berntsen Top Security Rod Monument with a 2-1/2" dia. domed survey cap and permanent magnet encased in a 6" dia. PVC pipe with a NGS style aluminum access cover.



*This document was prepared by DCI on 03-05-2013 for use by Johnson County, Iowa.*