

**Johnson County, Iowa**  
Iowa South Zone (1402)  
Horiz. Datum: **NAD83(NA2011)**  
Vert. Datum: NAVD 1988  
US Survey Feet  
**2013**

Point Name: **219**

**Designation:** 2006-219 Johnson Co GPS Control Pt. (Set by DCI in 2006)

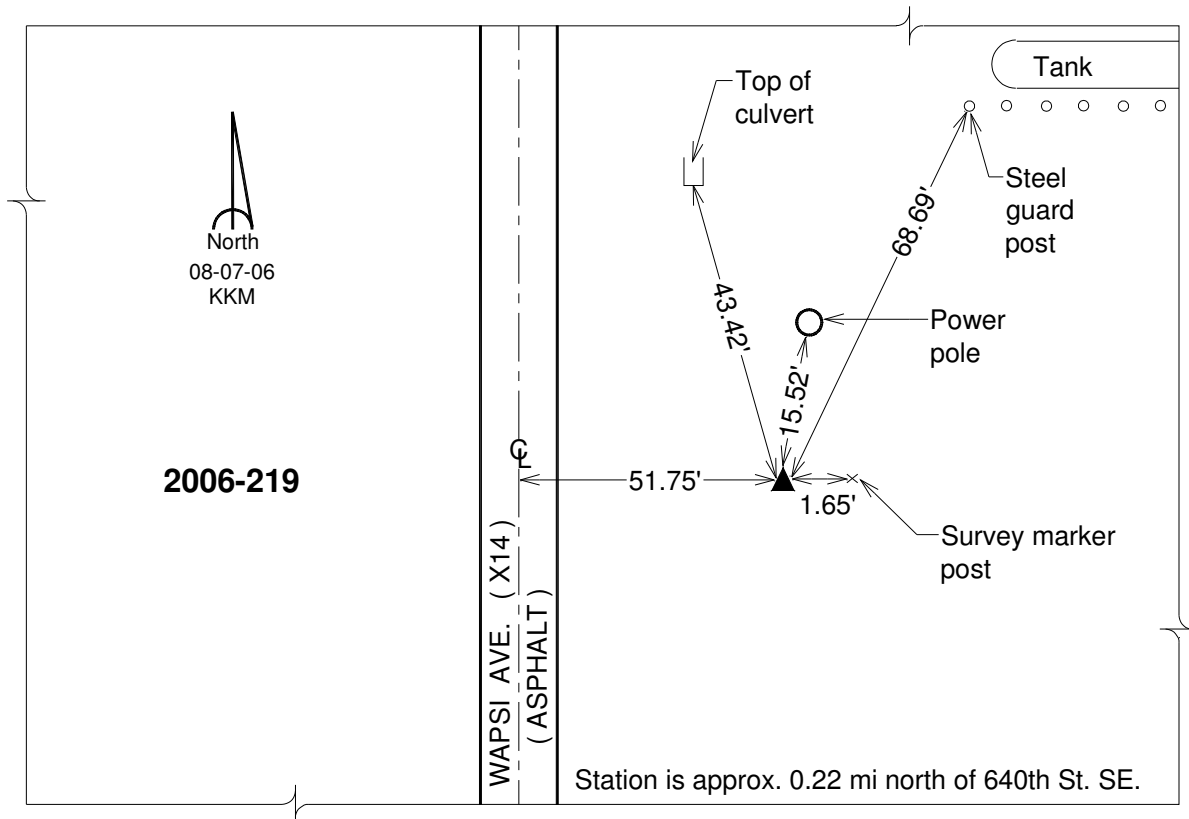
Northing: **542461.54sft**    Easting: **2208833.63sft**

Orthometric Height: **712.18sft**    Ellipsoid Height: **604.64sft**    **Geoid12A**

Latitude: **N41°28'13.08844"**    Longitude: **W91°25'32.42989"**

Mapping Angle: **1°21'59"**    Combination Scale Factor: **0.999930548**

**Monument Type:** Berntsen Top Security Rod Monument with a 2-1/2" dia. domed survey cap and permanent magnet encased in a 6" dia. PVC pipe with a NGS style aluminum access cover.



*This document was prepared by DCI on 03-05-2013 for use by Johnson County, Iowa.*