

Johnson County, Iowa
Iowa South Zone (1402)
Horiz. Datum: **NAD83(NA2011)**
Vert. Datum: NAVD 1988
US Survey Feet
2013

Point Name: **220**

Designation: 2006-220 Johnson Co GPS Control Pt. (Set by DCI in 2006)

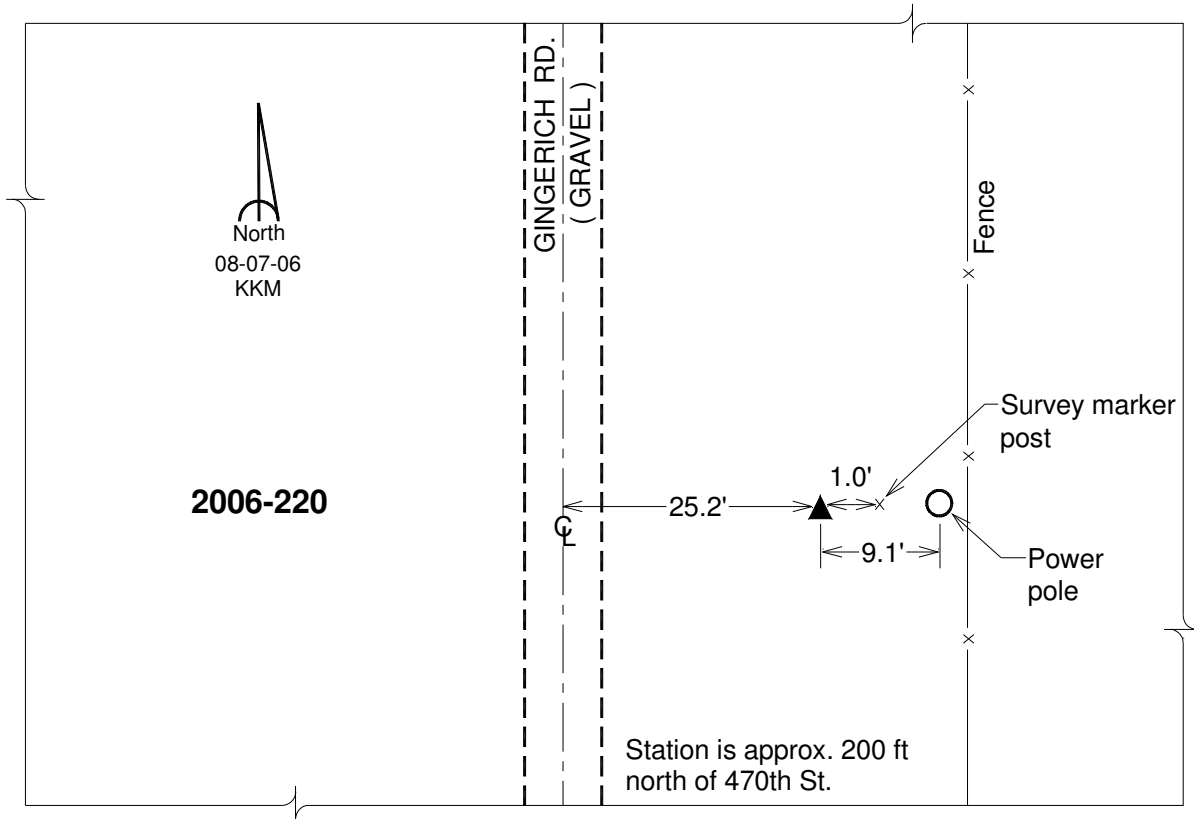
Northing: **585439.26sft** Easting: **2142296.27sft**

Orthometric Height: **758.49sft** Ellipsoid Height: **651.50sft** **Geoid12A**

Latitude: **N41°35'32.37509"** Longitude: **W91°39'54.37876"**

Mapping Angle: **1°12'31"** Combination Scale Factor: **0.999940580**

Monument Type: Berntsen Top Security Rod Monument with a 2-1/2" dia. domed survey cap and permanent magnet encased in a 6" dia. PVC pipe with a NGS style aluminum access cover.



This document was prepared by DCI on 03-05-2013 for use by Johnson County, Iowa.