

**Johnson County, Iowa**  
Iowa South Zone (1402)  
Horiz. Datum: **NAD83(NA2011)**  
Vert. Datum: NAVD 1988  
US Survey Feet  
**2013**

Point Name: **222**

**Designation:** 2006-222 Johnson Co GPS Control Pt. (Set by DCI in 2006)

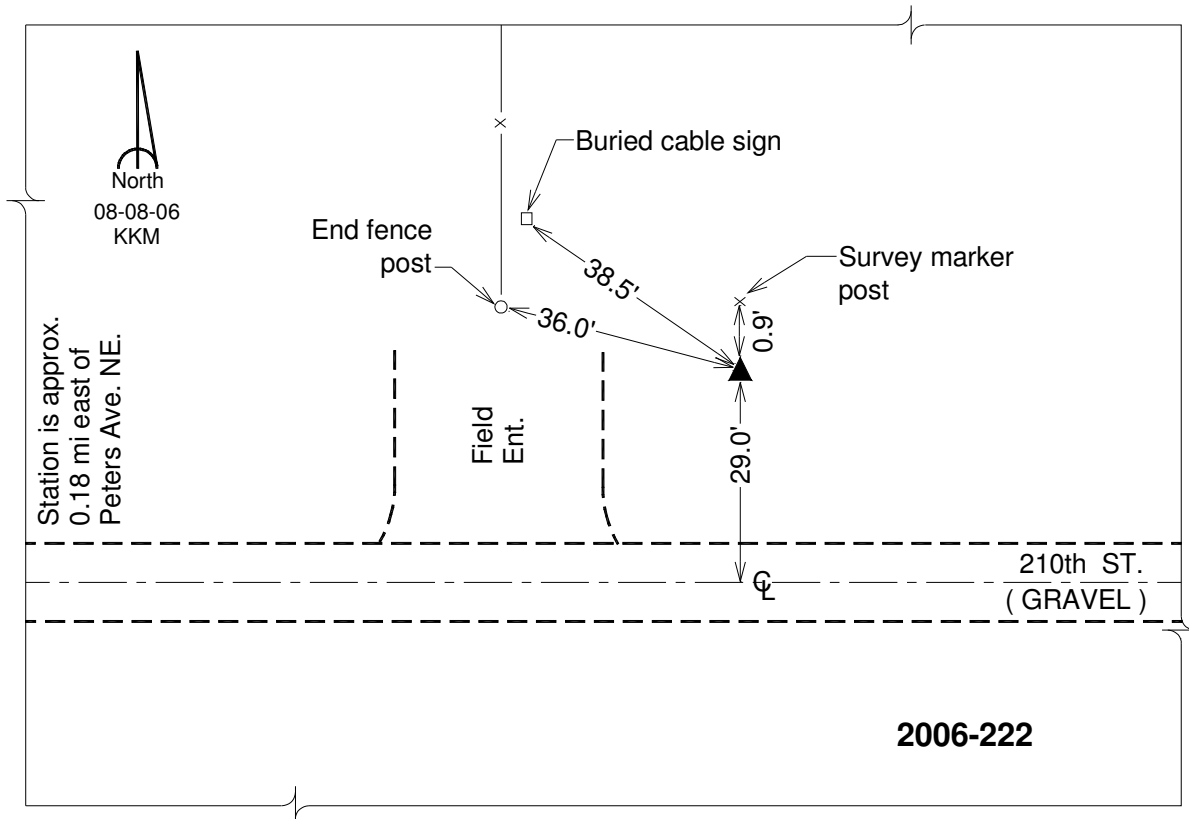
Northing: **654263.58sft**    Easting: **2207517.04sft**

Orthometric Height: **849.92sft**    Ellipsoid Height: **742.97sft**    **Geoid12A**

Latitude: **N41°46'37.66398"**    Longitude: **W91°25'14.61595"**

Mapping Angle: **1°22'11"**    Combination Scale Factor: **0.999963453**

**Monument Type:** Berntsen Top Security Rod Monument with a 2-1/2" dia. domed survey cap and permanent magnet encased in a 6" dia. PVC pipe with a NGS style aluminum access cover.



*This document was prepared by DCI on 03-05-2013 for use by Johnson County, Iowa.*