

Johnson County, Iowa
Iowa South Zone (1402)
Horiz. Datum: **NAD83(NA2011)**
Vert. Datum: NAVD 1988
US Survey Feet
2013

Point Name: **223**

Designation: 2006-223 City of North Liberty GPS Control (Set by DCI in 2006)

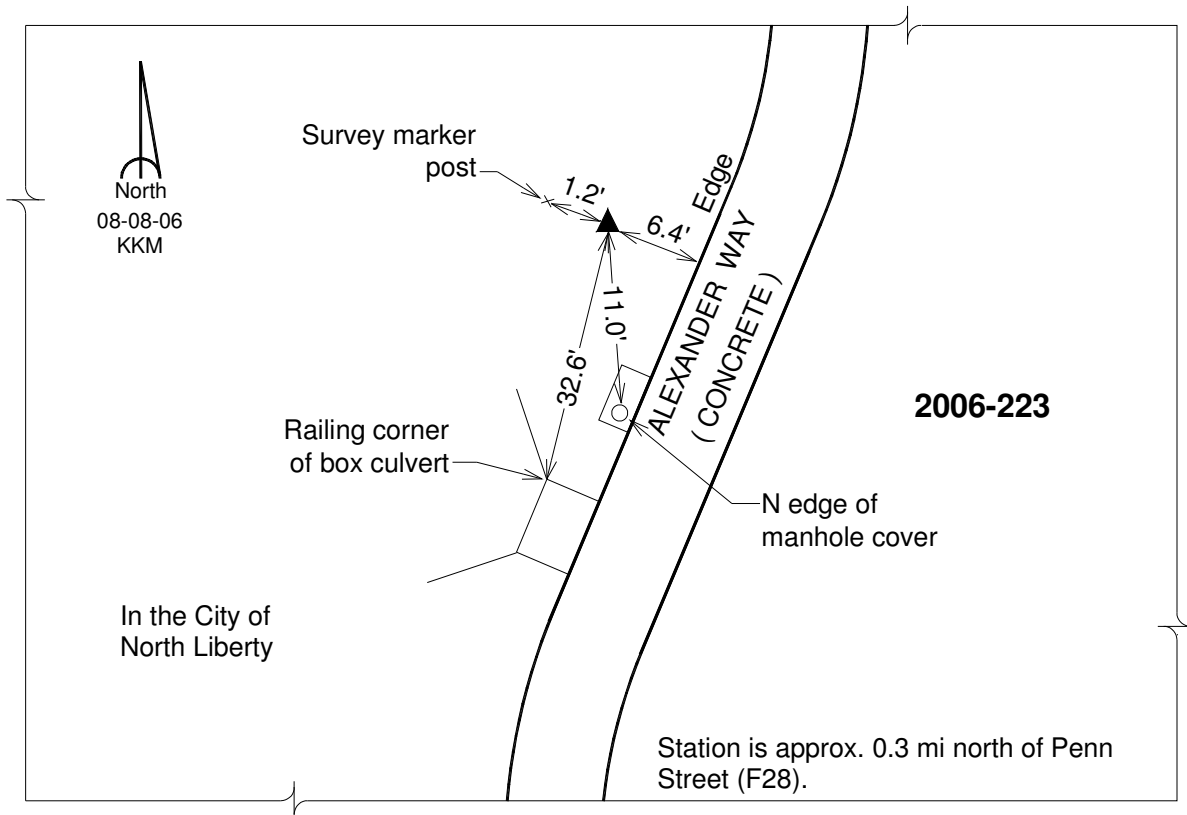
Northing: **645727.17sft** Easting: **2151136.58sft**

Orthometric Height: **764.15sft** Ellipsoid Height: **657.41sft** **Geoid12A**

Latitude: **N41°45'26.00151"** Longitude: **W91°37'40.98616"**

Mapping Angle: **1°13'59"** Combination Scale Factor: **0.999964099**

Monument Type: Berntsen Top Security Rod Monument with a 2-1/2" dia. domed survey cap and permanent magnet encased in a 6" dia. PVC pipe with a NGS style aluminum access cover.



This document was prepared by DCI on 03-05-2013 for use by Johnson County, Iowa.