

Johnson County, Iowa
Iowa South Zone (1402)
Horiz. Datum: **NAD83(NA2011)**
Vert. Datum: NAVD 1988
US Survey Feet
2013

Point Name: **224**

Designation: 2006-224 City of North Liberty GPS Control (Set by DCI in 2006)

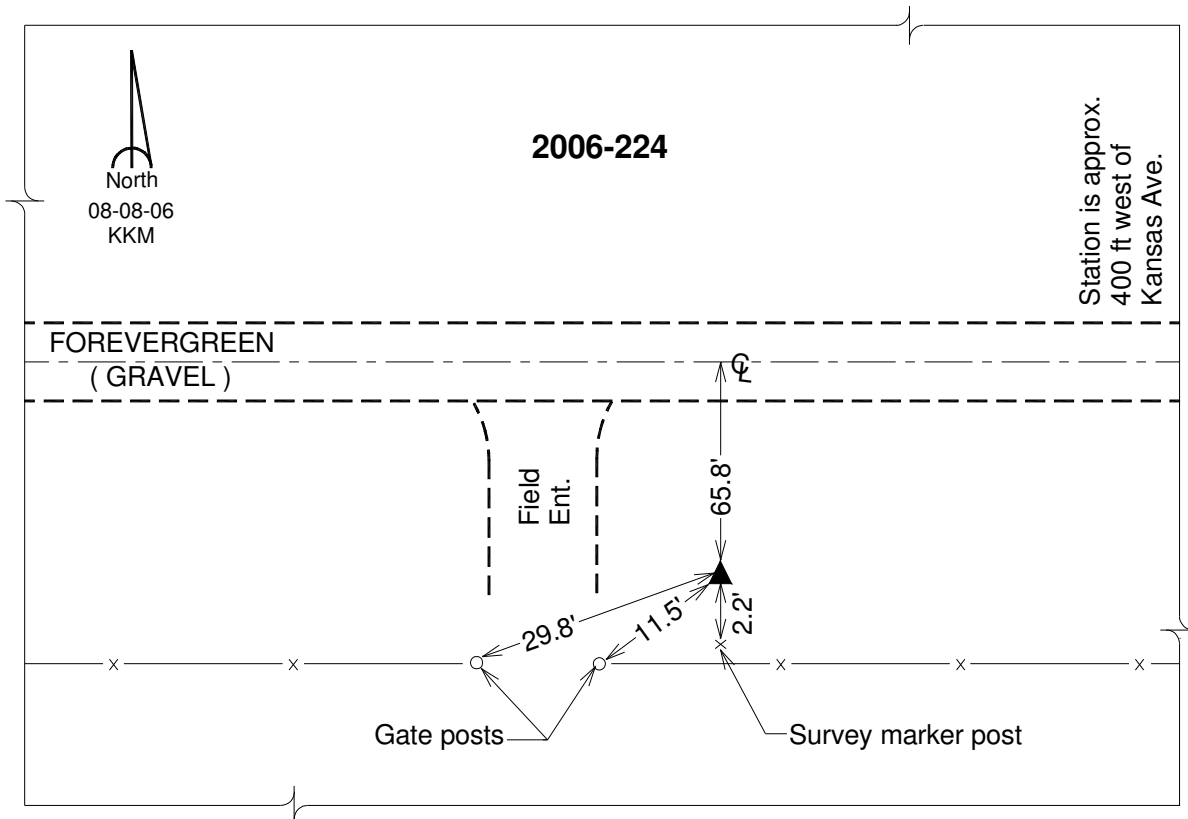
Northing: **633240.78sft** Easting: **2148492.84sft**

Orthometric Height: **785.16sft** Ellipsoid Height: **678.36sft** **Geoid12A**

Latitude: **N41°43'23.23200"** Longitude: **W91°38'19.38491"**

Mapping Angle: **1°13'34"** Combination Scale Factor: **0.999957495**

Monument Type: Berntsen Top Security Rod Monument with a 2-1/2" dia. domed survey cap and permanent magnet encased in a 6" dia. PVC pipe with a NGS style aluminum access cover.



This document was prepared by DCI on 03-05-2013 for use by Johnson County, Iowa.